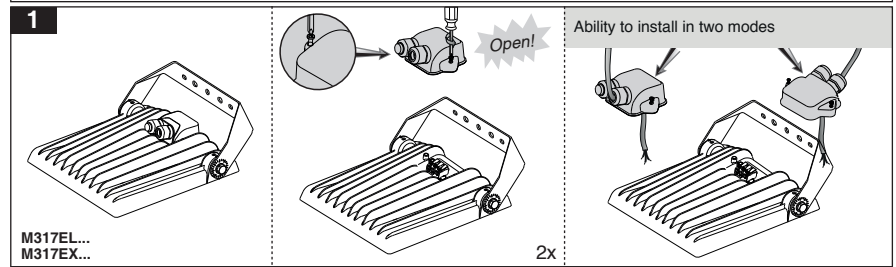
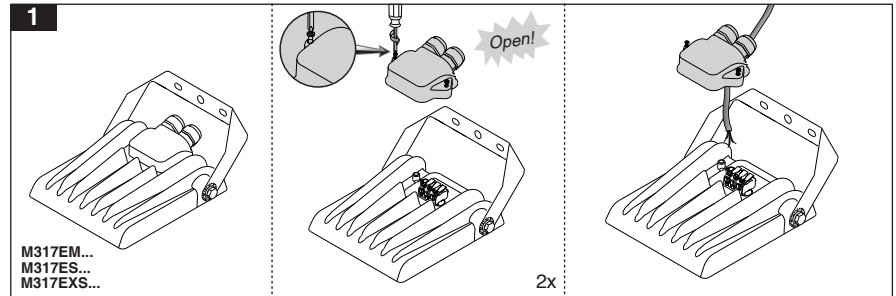


- ⚠
- 1- For proper utilization of this product and safety, it is mandatory to closely comply with the directions and notes in this instruction and guide.
 - 2- Earth connection as provided is mandatory.
 - 3-When various power loads exist, a separate switchboard including all protective equipment should be considered for the lighting system.
 - 4-During any construction process such as welding, etc., make sure that the luminaires are switched off or a stabilizer is used to prevent power disturbances leading to serious damage to the drivers or other electrical components.
 - 5-Serious damage in electrical components will be caused by applying inappropriate voltage.
 - 6-If a luminaire has a specified Ingress Protection rating, protection devices such as glands, etc., should be used to provide the desired IP.
 - 7- Do not stare at LED light source.

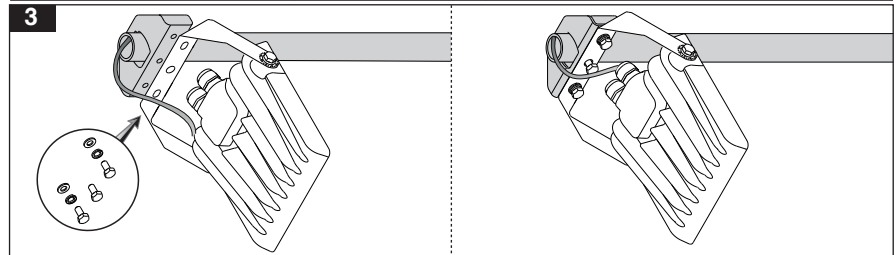


2

Cable Size (60245 IEC 57)			Cable Size (60245 IEC 57)		
Cat. No	Ø (mm)	Cable (mm²)	Cat. No	Ø (mm)	Cable (mm²)
M317ES...	6.5-9.5	3X1 mm²	M317ES...	6.5-9.5	3X1 mm²
M317EM...	6.5-9.5	3X1.5 mm²	M317EM...	6.5-9.5	3X1.5 mm²
M317EL...	8-12	3X1.5 mm²	M317EL...	8-12	3X1.5 mm²
M317EX...	8-12	3X2.5 mm²	M317EX...	8-12	3X2.5 mm²
M317EXS...	8-12	3X2.5 mm²	M317EXS...	8-12	3X2.5 mm²

Looping

max.50 mm



Installing the luminaire to the 2.5 and 3cm-diameter pole and rectangular 2x2 and 3x3 cm hollow using special mounting bracket. (PDP2-Bracket-S, PDP3-Bracket-S)

