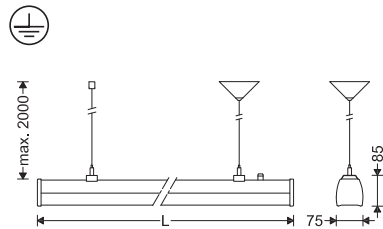
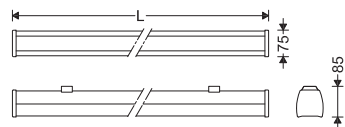


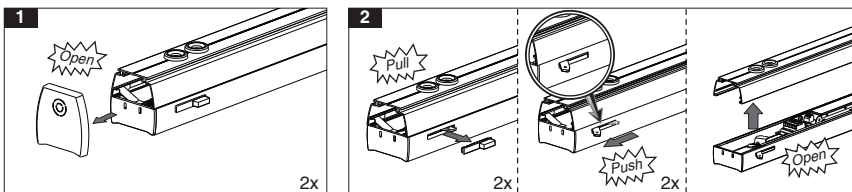
Cat. Code	Dimensions	
	L(mm)	W (kg)
M457N601LED...	60	1.4
M457W601LED...		
M457DA601LED...		
M457A601LED...		
M457N1152LED...	115	2.3
M457W1152LED...		
M457DA1152LED...		
M457A1152LED...		
M457N1453LED...	145	2.6
M457W1453LED...		
M457A1453LED...		
M457DA1453LED...		
M457N1703LED...	170	3.1
M457W1703LED...		
M457DA1703LED...		
M457A1703LED...		



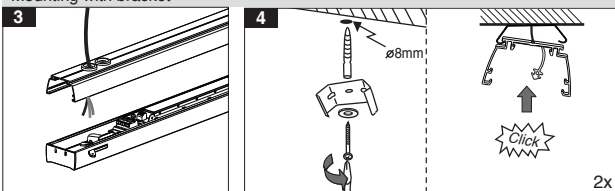
M457... + G440EKSU...



M457...

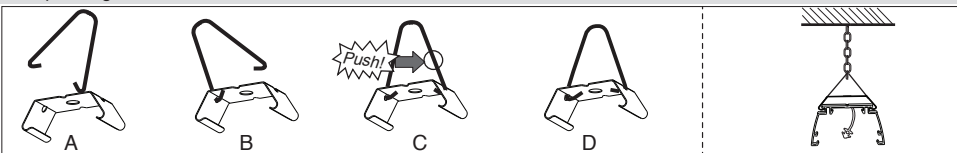


Mounting with bracket

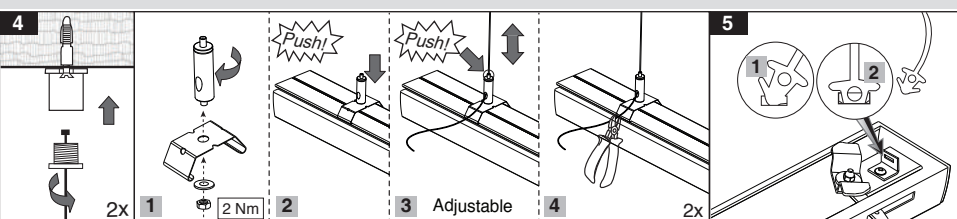


- For proper utilization of this product and safety, it is mandatory to closely comply with the directions and notes in this instruction and guide.
- Earth connection as provided is mandatory.
- Do not directly touch or impact LED module.
- Do not stare at LED light source.
- Since this luminaire is made of plastic materials, its resistance against chemical products may be limited or even null.
- The light source contained in this luminaire shall only be replaced by the manufacturer or his service agent or a similar qualified person. Always switch off the power prior to installation, maintenance or repair activities.

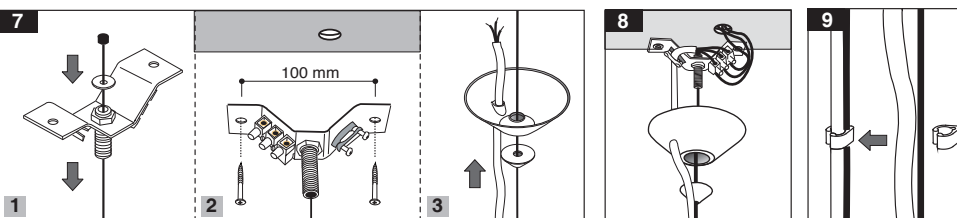
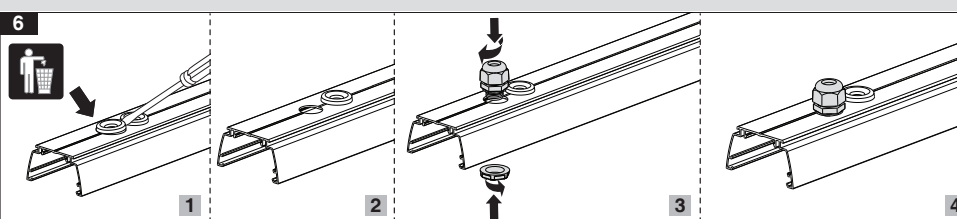
Suspending with bracket



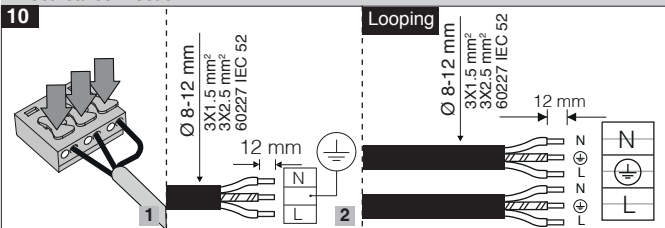
G440EKSU... + G440EKSU3-W



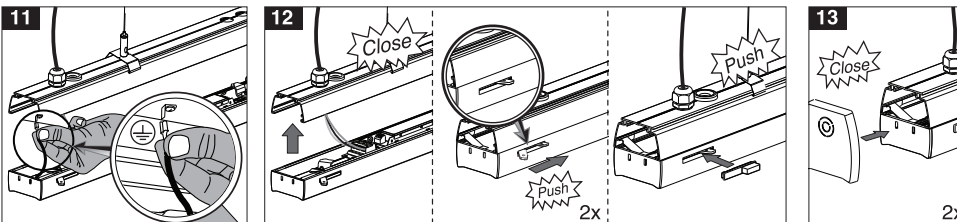
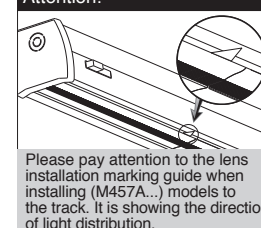
G440EKSU3-W

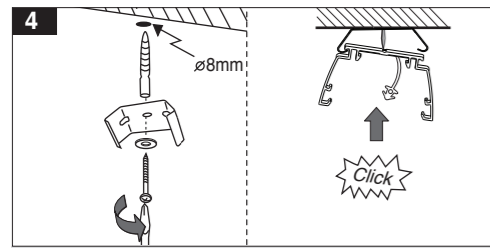
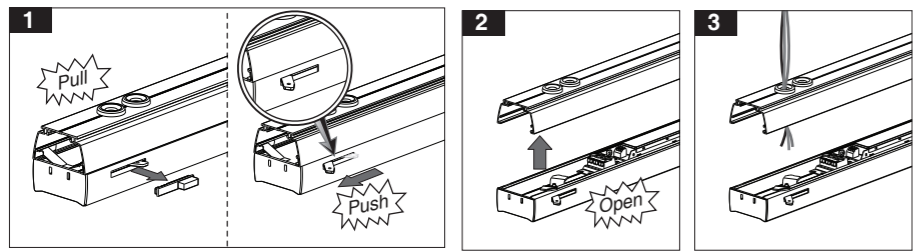


Electrical connection

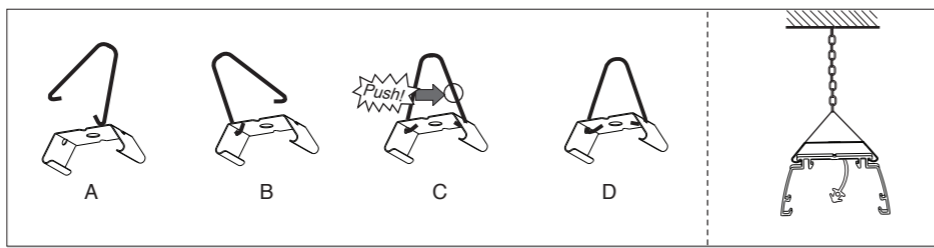


Attention!



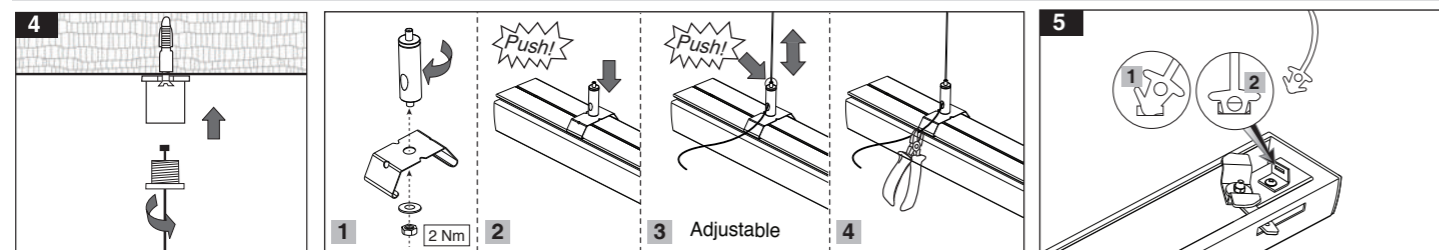


Mounting with bracket

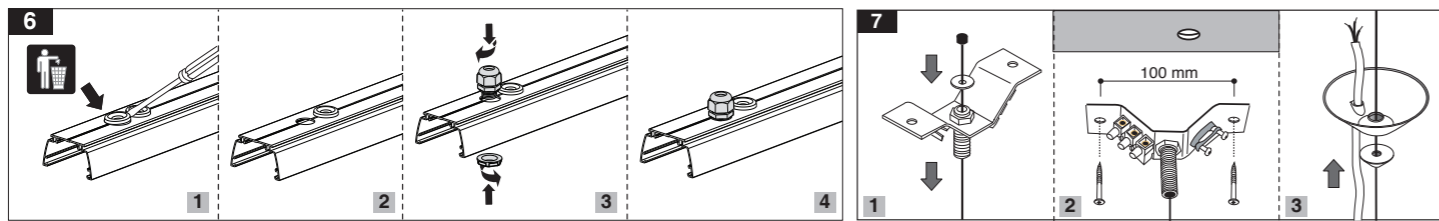


Suspending with bracket

**G440EKSU... + G440EKSU3-W**

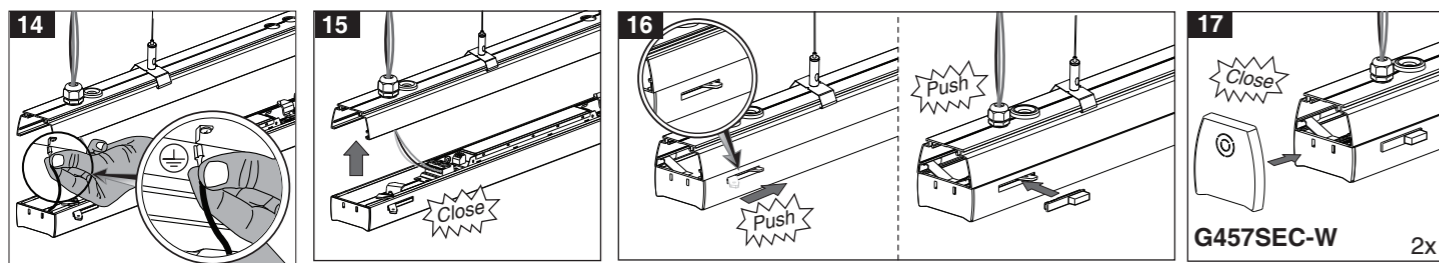
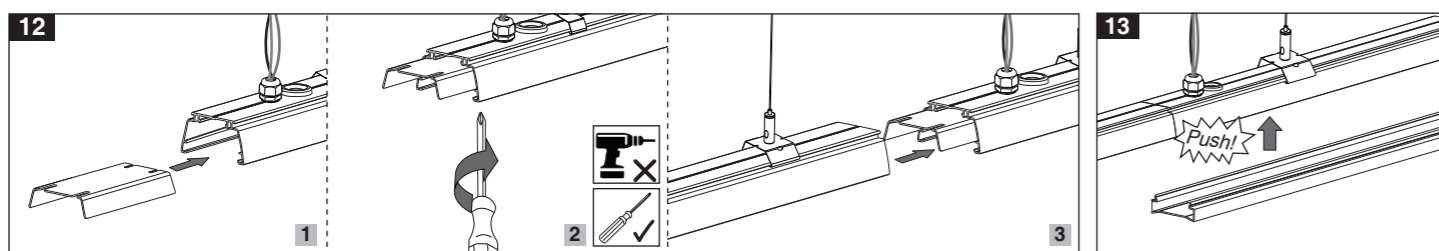
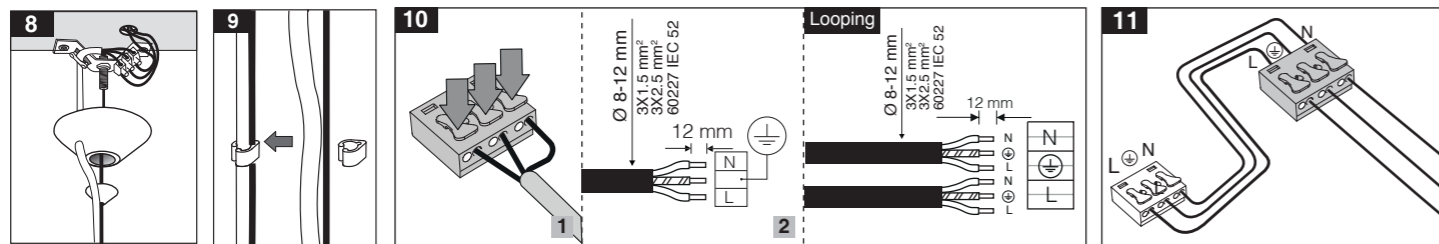


**G440EKSU3-W**



**Electrical connection**

**Housing terminal to gear tray wiring**

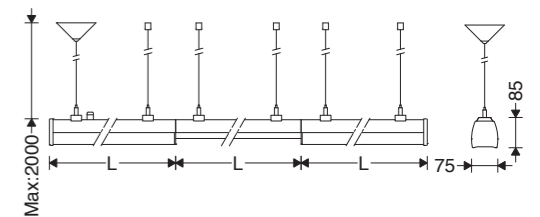


**EN** Instruction for Installation and Utilization of **LUMiLINE** Recessed Light bar

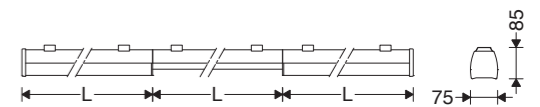
7002019317

www.megalite.com info@megalite.com

Cat. Code	Dimensions	
	L(mm)	W (kg)
M457SN601LED...	60	1.4
M457SW601LED...		
M457SDA601LED...		
M457SA601LED...		
M457SN1152LED...	115	2.3
M457SW1152LED...		
M457SDA1152LED...		
M457SA1152LED...		
M457SN1453LED...	145	2.6
M457SW1453LED...		
M457SDA1453LED...		
M457SA1453LED...		
M457SN1703LED...	170	3.1
M457SW1703LED...		
M457SDA1703LED...		
M457SA1703LED...		



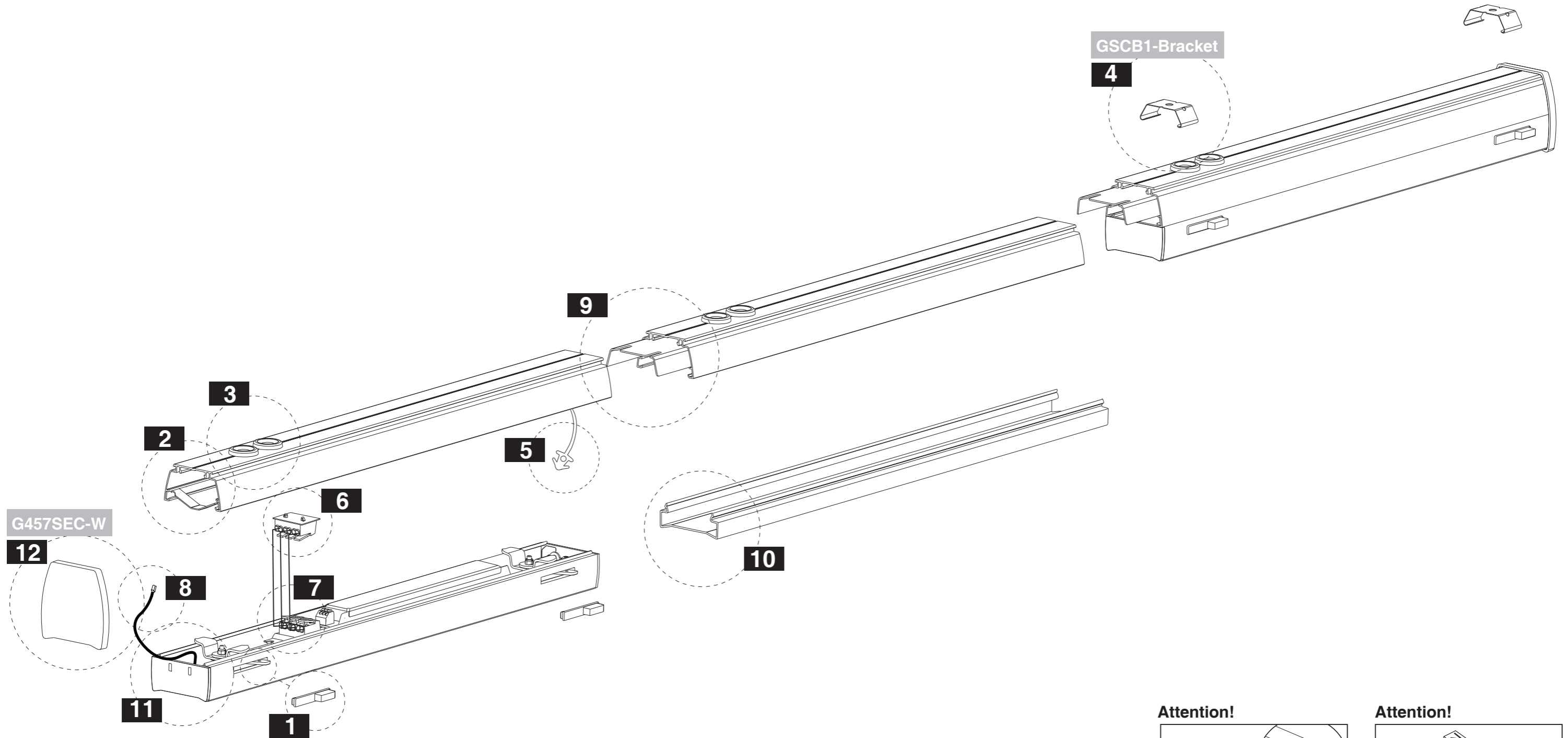
M457S...+ G440EKSU...+ G457AM...



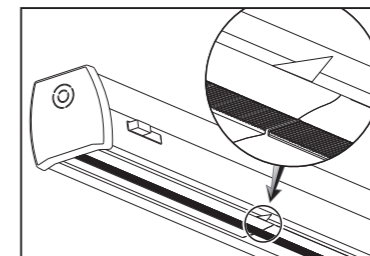
M457S...+ G457AM...



- 1- For proper utilization of this product and safety, it is mandatory to closely comply with the directions and notes in this instruction and guide.
- 2- Earth connection as provided is mandatory.
- 3- Do not directly touch or impact LED module.
- 4- Do not stare at LED light source.
- 5- Since this luminaire is made of plastic materials, its resistance against chemical products may be limited or even null.
- 6- The light source contained in this luminaire shall only be replaced by the manufacturer or his service agent or a similar qualified person. Always switch off the power prior to installation, maintenance or repair activities.

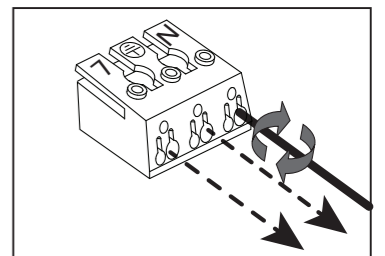


**Attention!**



Please pay attention to the lens installation marking guide when installing (M457SA...) models to the track. It is showing the direction of light distribution.

**Attention!**



Detach the wires from the last terminal at the end