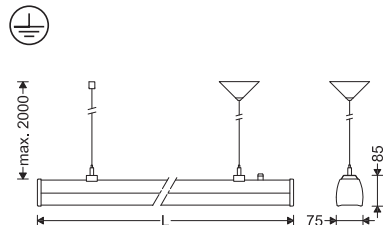
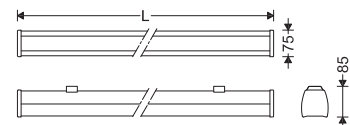


Cat. Code	Dimensions	
	L(mm)	W (kg)
M457N601LED...	60	1.4
M457W601LED...		
M457DA601LED...		
M457A601LED...		
M457N1152LED...	115	2.3
M457W1152LED...		
M457DA1152LED...		
M457A1152LED...		
M457N1453LED...	145	2.6
M457W1453LED...		
M457A1453LED...		
M457DA1453LED...		
M457N1703LED...	170	3.1
M457W1703LED...		
M457DA1703LED...		
M457A1703LED...		

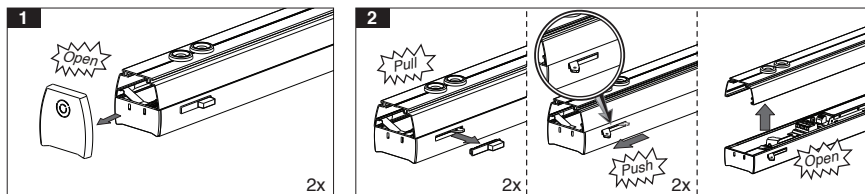


M457...+ G440CKSU...

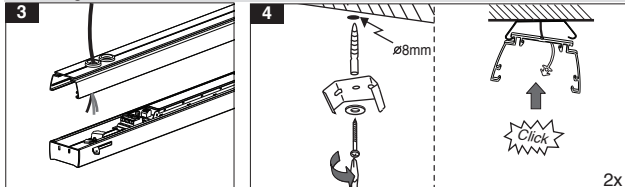


M457...

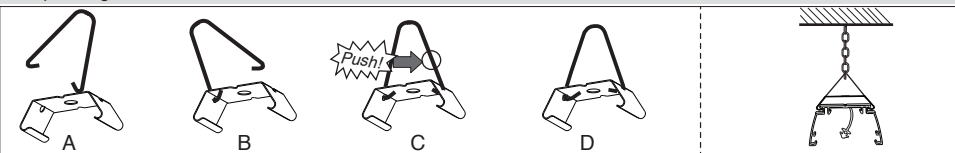
- !**
- For proper utilization of this product and safety, it is mandatory to closely comply with the directions and notes in this instruction and guide.
 - Earth connection as provided is mandatory.
 - Do not directly touch or impact LED module.
 - Do not stare at LED light source.
 - Since this luminaire is made of plastic materials, its resistance against chemical products may be limited or even null.
 - The light source contained in this luminaire shall only be replaced by the manufacturer or his service agent or a similar qualified person. Always switch off the power prior to installation, maintenance or repair activities.



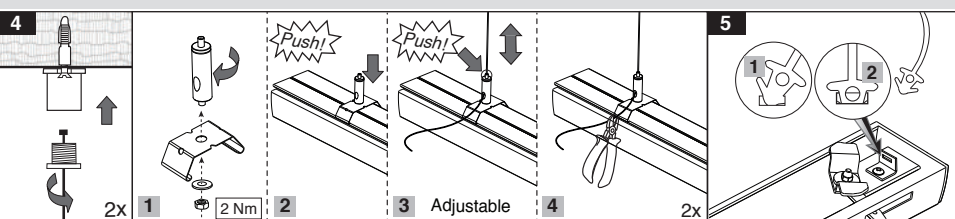
Mounting with bracket



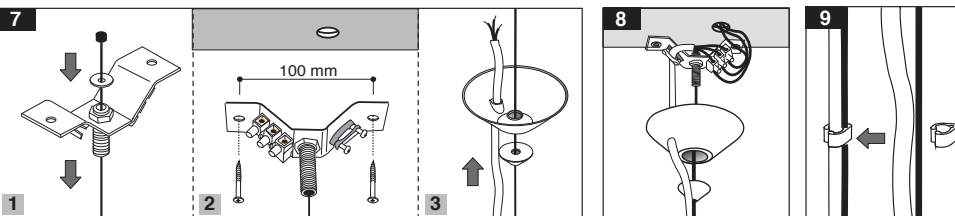
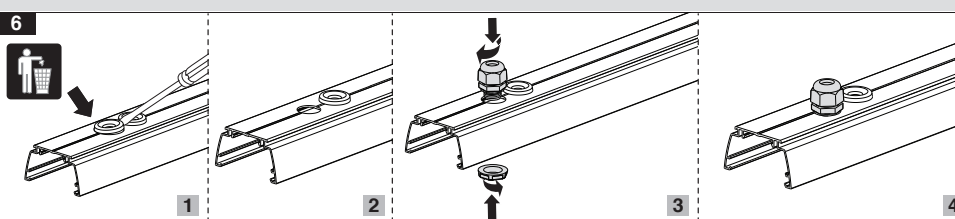
Suspending with bracket



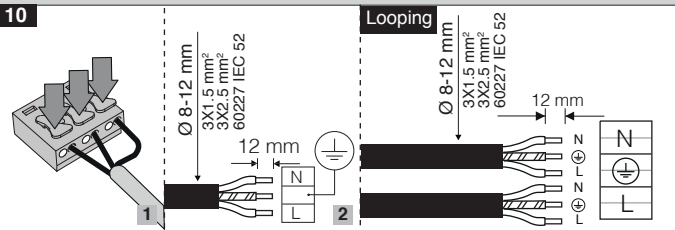
G440CKSU... + G440CKSU3-W



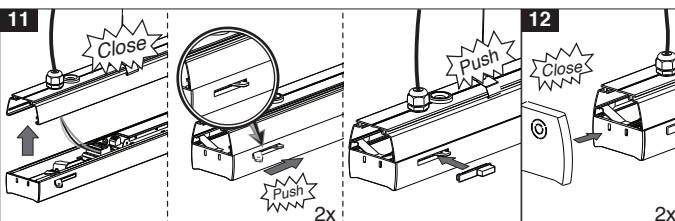
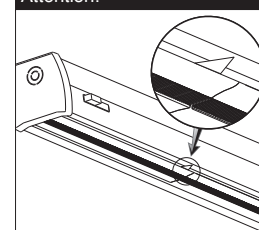
G440CKSU3-W



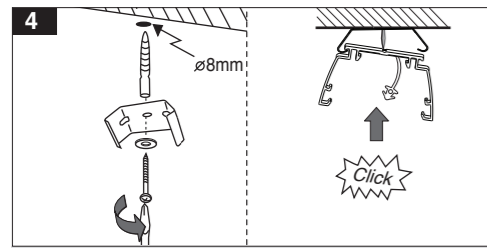
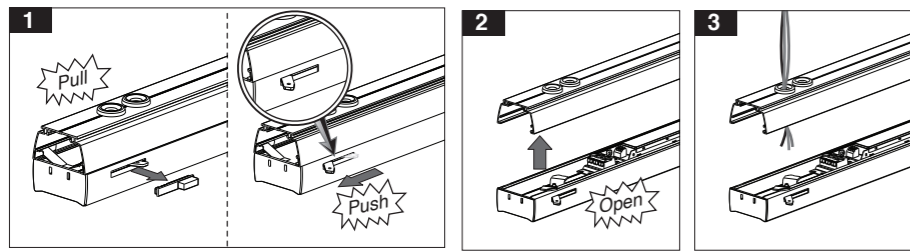
Electrical connection



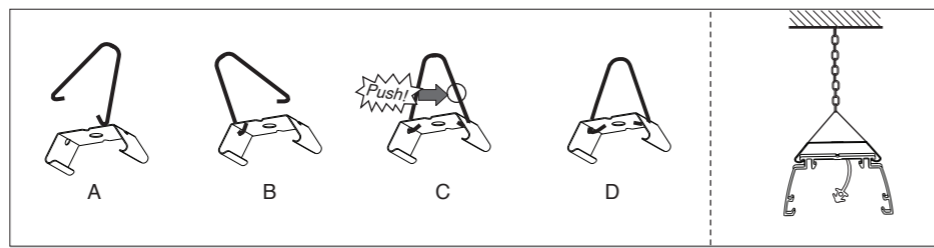
Attention!



Please pay attention to the lens installation marking guide when installing (M457A...) models to the track. It is showing the direction of light distribution.

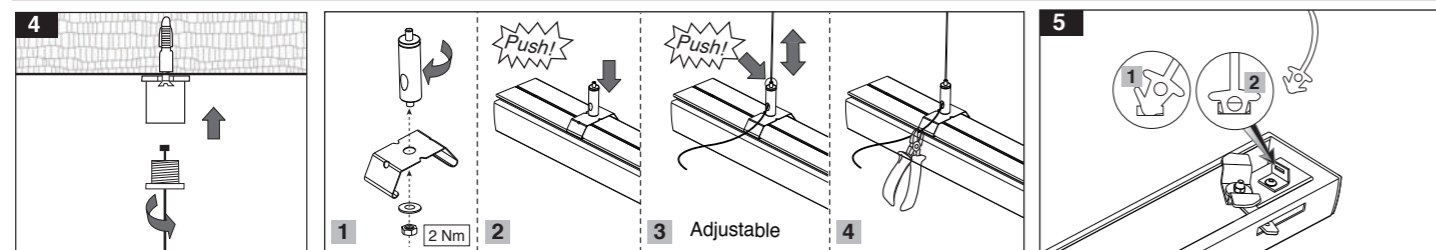


Mounting with bracket

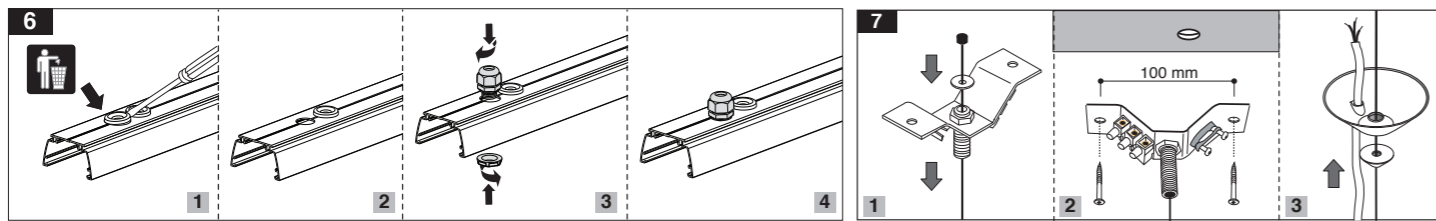


Suspending with bracket

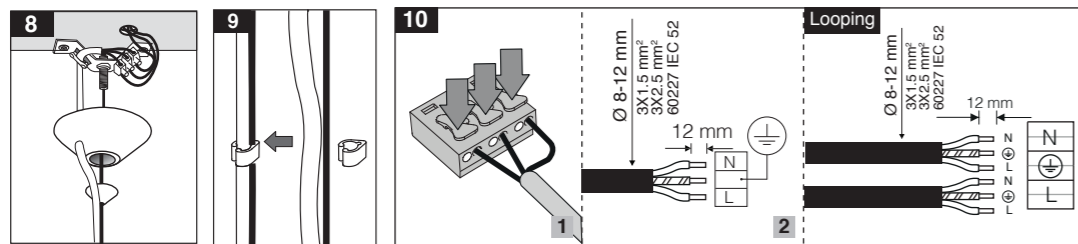
G440CKSU... + G440CKSU3-W



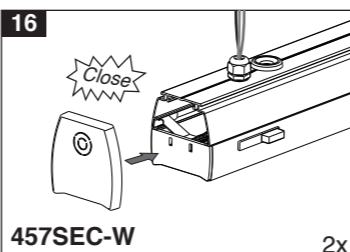
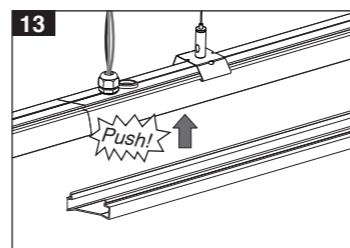
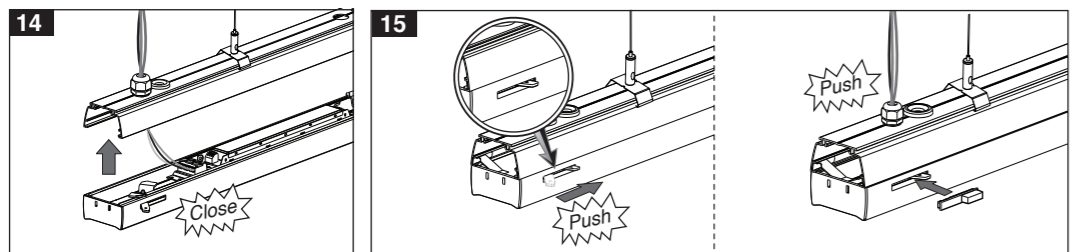
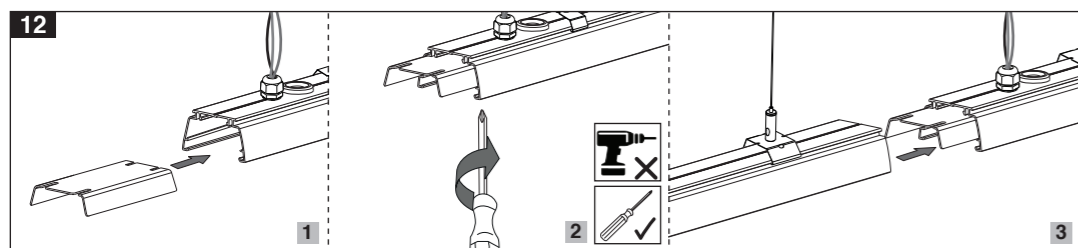
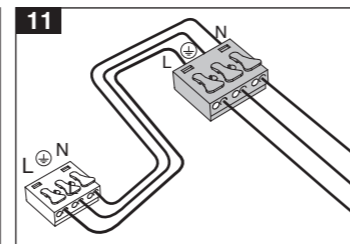
G440CKSU3-W



Electrical connection



Housing terminal to gear tray wiring



457SEC-W

2x

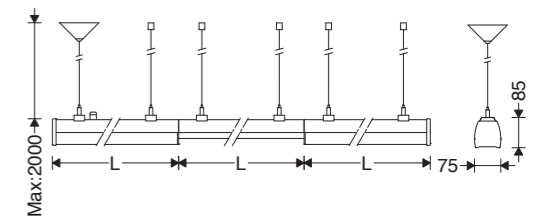
EN Instruction for Installation and Utilization of **LUMiLINE** Recessed Light bar

7002019316

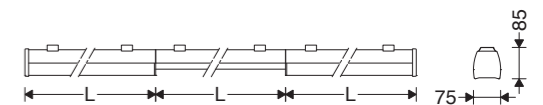
www.megalite.com info@megalite.com



Cat. Code	Dimensions	
	L(mm)	W (kg)
M457SN601LED...	60	1.4
M457SW601LED...		
M457SDA601LED...		
M457SA601LED...		
M457SN1152LED...	115	2.3
M457SW1152LED...		
M457SDA1152LED...		
M457SA1152LED...		
M457SN1453LED...	145	2.6
M457SW1453LED...		
M457SDA1453LED...		
M457SA1453LED...		
M457SN1703LED...	170	3.1
M457SW1703LED...		
M457SDA1703LED...		
M457SA1703LED...		



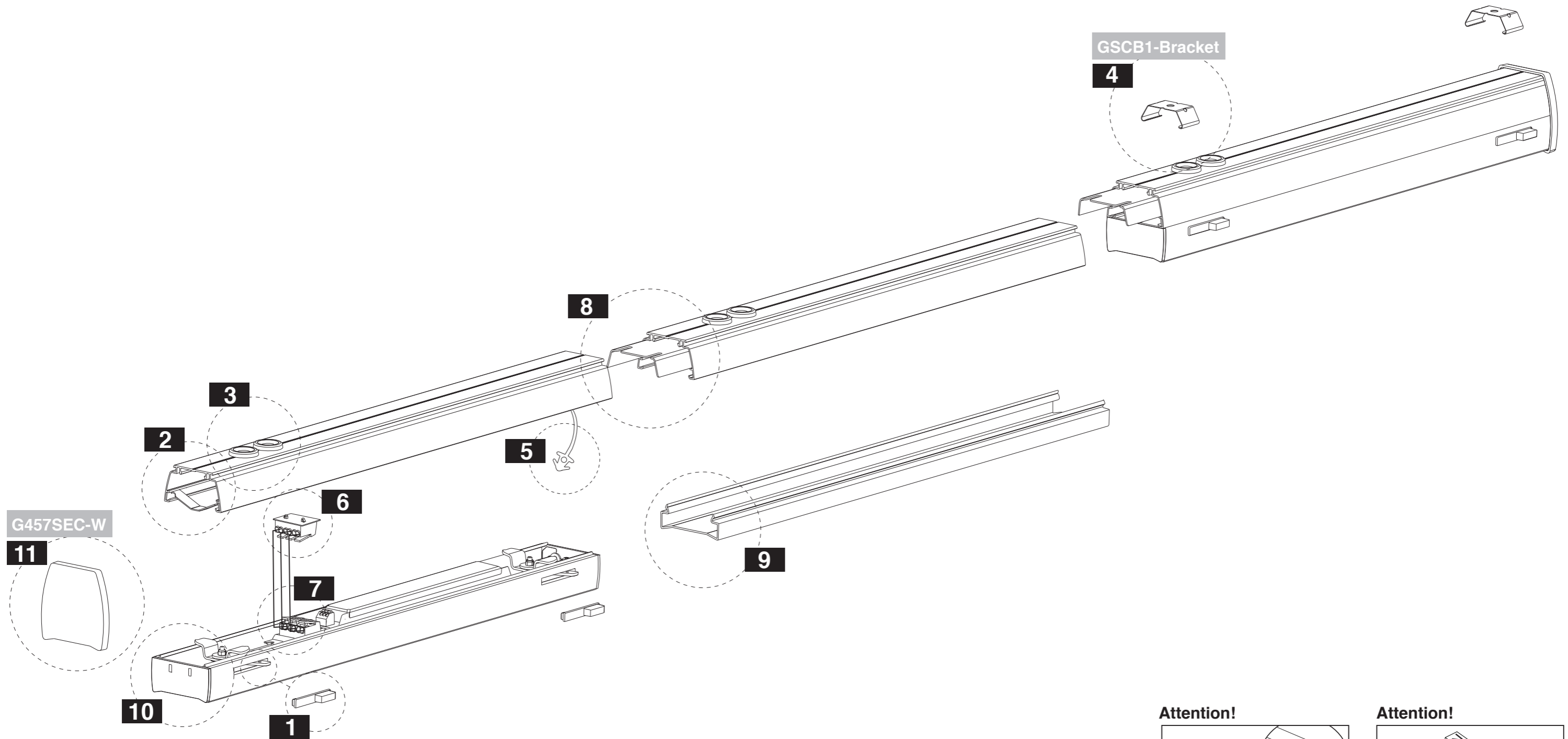
M457S...+ G440CKSU...+ G457AM...



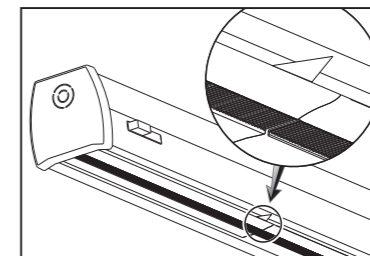
M457S...+ G457AM...

- 1- For proper utilization of this product and safety, it is mandatory to closely comply with the directions and notes in this instruction and guide.
- 2- Earth connection as provided is mandatory.
- 3- Do not directly touch or impact LED module.
- 4- Do not stare at LED light source.
- 5- Since this luminaire is made of plastic materials, its resistance against chemical products may be limited or even null.
- 6- The light source contained in this luminaire shall only be replaced by the manufacturer or his service agent or a similar qualified person. Always switch off the power prior to installation, maintenance or repair activities.



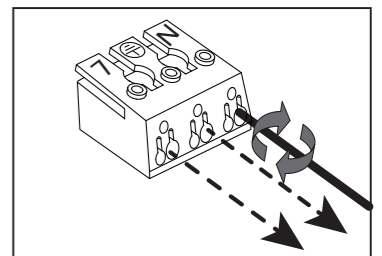


Attention!



Please pay attention to the lens installation marking guide when installing (M457SA...) models to the track. It is showing the direction of light distribution.

Attention!



Detach the wires from the last terminal at the end