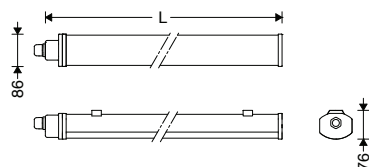


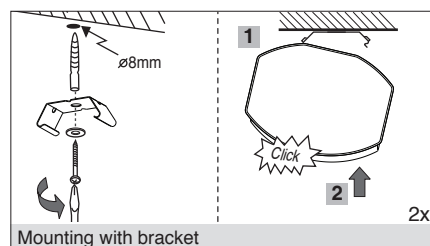
**EN** Instruction for Installation and Utilization of **LEDiSEAL** Dust and Moisture Proof Luminaire



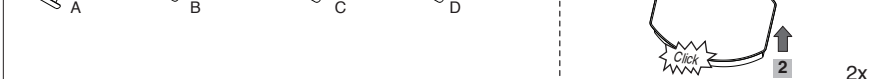
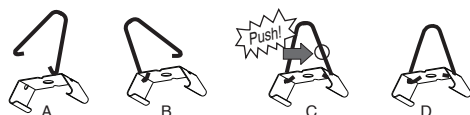
Cat. Code	Dimensions		W
	L(mm)	(kg)	
M453L601LED2840	625	1.5	
M453L1152LED2840	1185	2.4	
M453L1453LED2840	1465	2.9	
M453L1703LED2840	1745	3.2	



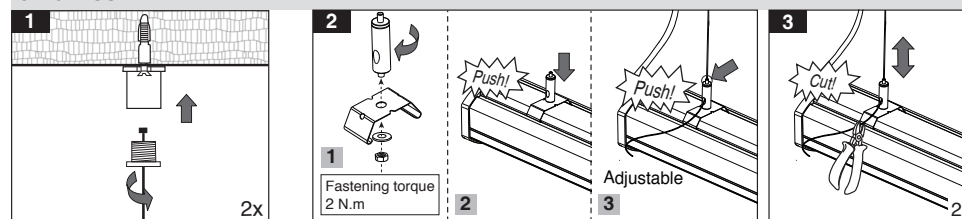
- 1- For proper utilization of this product and safety, it is mandatory to closely comply with the directions and notes in this instruction and guide.
- 2- Earth connection as provided is mandatory.
- 3- Since this luminaire is made of plastic materials, its resistance against chemical products may be limited or even null.
- 4- The light source contained in this luminaire shall only be replaced by the manufacturer or his service agent or a similar qualified person. Always switch off the power prior to installation, maintenance or repair activities.
- 5- Luminaire end caps shall not be opened, otherwise IP rating would not be maintained.



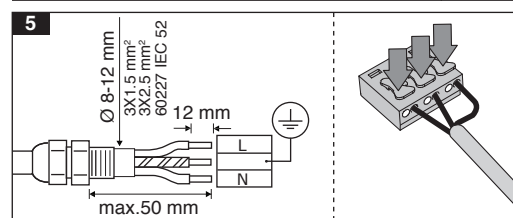
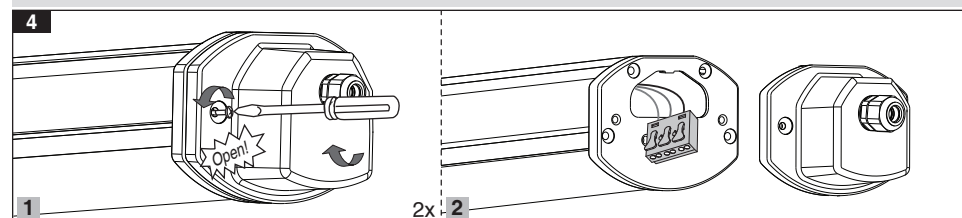
Mounting with bracket



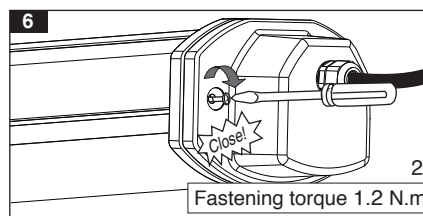
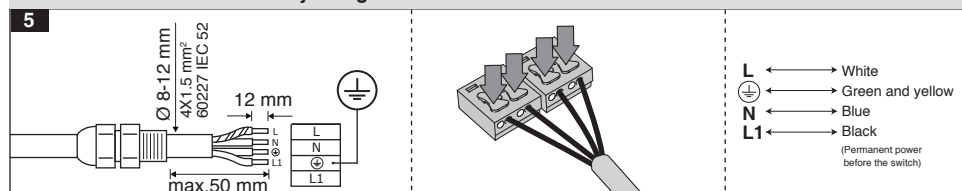
**G440EKSU...**



**Electrical connection**



**Electrical connection for battery-using luminaire**



**Through wiring**

