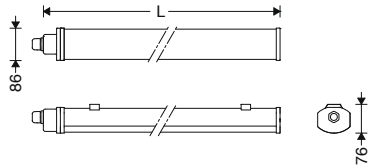


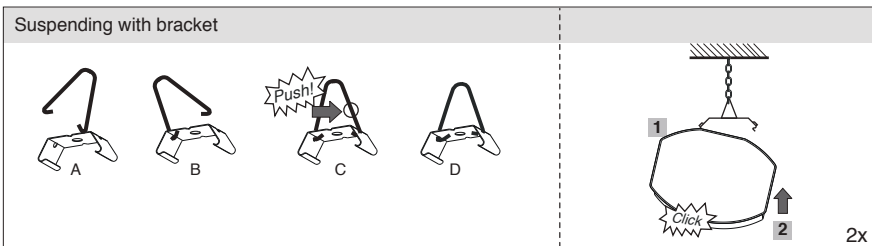
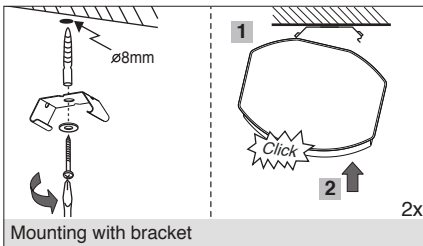
EN Instruction for Installation and Utilization of **LEDiSEAL** Dust and Moisture Proof Luminaire



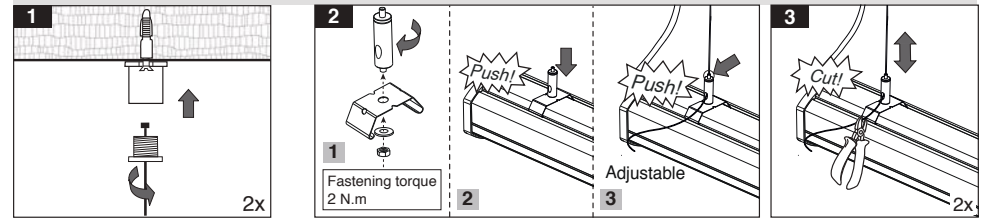
Cat. Code	Dimentions	Max Temp.	Min Temp.	W
	L(mm)	(C.)	(C.)	
M453L601LED2840	625	45°	-20°	1.5
M453L1152LED2840	1185	50°	-20°	2.4
M453L1453LED2840	1465	50°	-20°	2.9
M453L1703LED2840	1745	50°	-20°	3.2



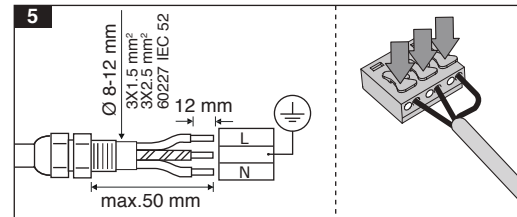
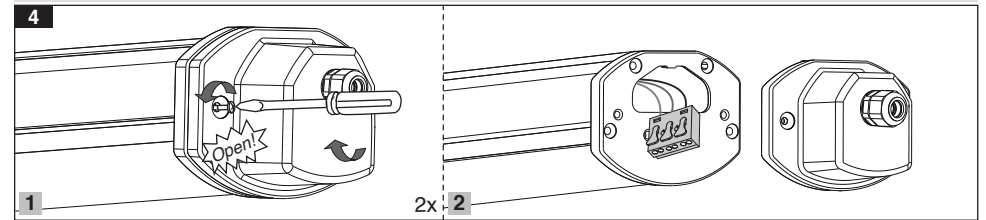
- !**
- 1- For proper utilization of this product and safety, it is mandatory to closely comply with the directions and notes in this instruction and guide.
 - 2- Earth connection as provided is mandatory.
 - 3- Since this luminaire is made of plastic materials, its resistance against chemical products may be limited or even null.
 - 4- The light source contained in this luminaire shall only be replaced by the manufacturer or his service agent or a similar qualified person. Always switch off the power prior to installation, maintenance or repair activities.
 - 5- Luminaire end caps shall not be opened, otherwise IP rating would not be maintained



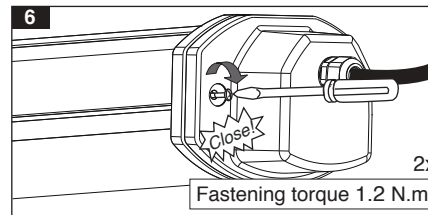
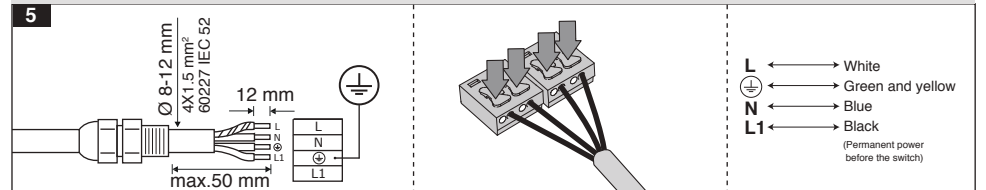
G440EKSU...



Electrical connection



Electrical connection for battery-using luminaire



Through wiring

