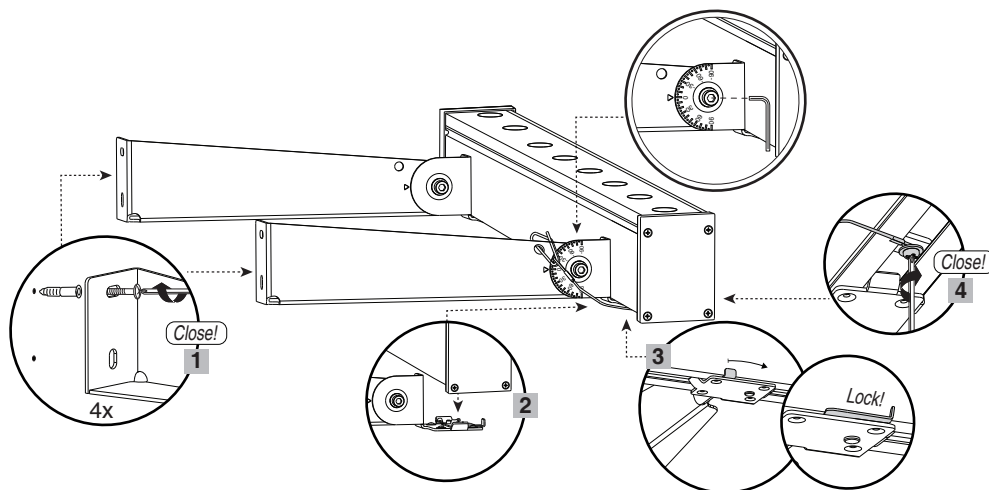
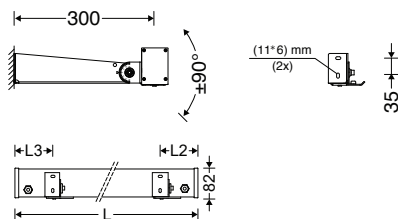


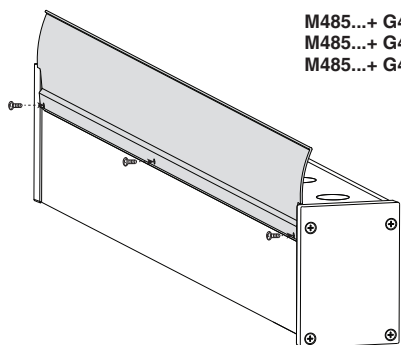
Wall mounting brackets

GWAL30-Bracket-S

| Cat. No. | L | L2 | L3 |
|----------------------------------|-----|-----|-----|
| M485...24LED...+GWAL30-Bracket-S | 245 | 95 | 50 |
| M485...48LED...+GWAL30-Bracket-S | 485 | 120 | 120 |
| M485...96LED...+GWAL30-Bracket-S | 965 | 150 | 150 |



Optional extruded aluminum shader in 24, 48 and 96 cm



M485...+ G485SH24-S
M485...+ G485SH48-S
M485...+ G485SH96-S

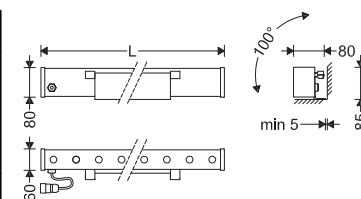
EN Instruction for Installation and Utilization of **LEDiLINE** Wall Washer Luminaire

7002016421

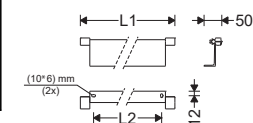
www.megalite.com info@megalite.com



| Cat. No. | L | L1 | L2 | Bracket | # | | | | |
|-----------------|-----|----|----|----------|-----|----------|---|--|--|
| M485N241LED... | 245 | | | GDMRC-18 | 1 | | | | |
| M485V241LED... | | | | | | | | | |
| M485SN241LED... | | | | | | | | | |
| M485SV241LED... | | | | | | | | | |
| M485N481LED... | 485 | | | | | GDMRC-19 | 1 | | |
| M485V481LED... | | | | | | | | | |
| M485SN481LED... | | | | | | | | | |
| M485SV481LED... | | | | | | | | | |
| M485N962LED... | 965 | | | | | | | | |
| M485V962LED... | | | | | | | | | |
| M485SN962LED... | | | | | | | | | |
| M485SV962LED... | | | | | | | | | |
| GDMRC-18 | - | | | 110 | 30 | | | | |
| GDMRC-19 | - | | | 260 | 180 | | | | |



M485...

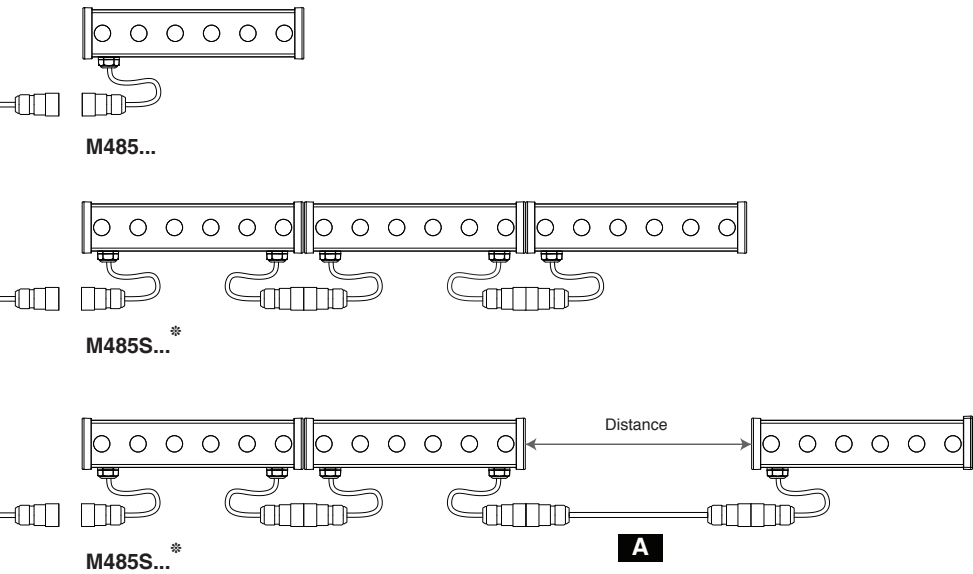


GDMRC...



- 1- For proper utilization of this product and safety, it is mandatory to closely comply with the directions and notes in this instruction and guide.
- 2- Earth connection as provided is mandatory.
- 3- Do not stare at LED light source.

Megalite
Crafted for Brilliance



A

If the distance between two luminaires is more than the length of the luminaire cable, use the G485CJ3 for the as shown in the picture.

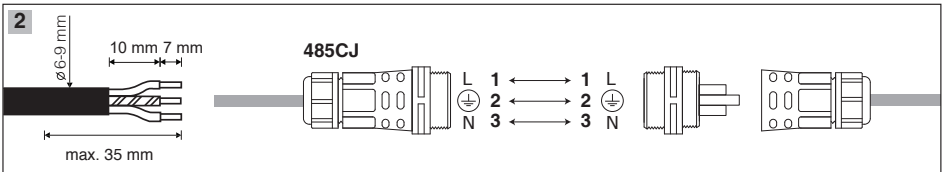
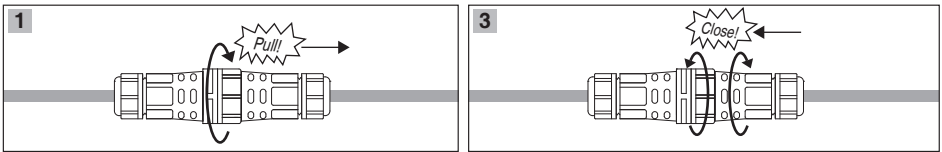
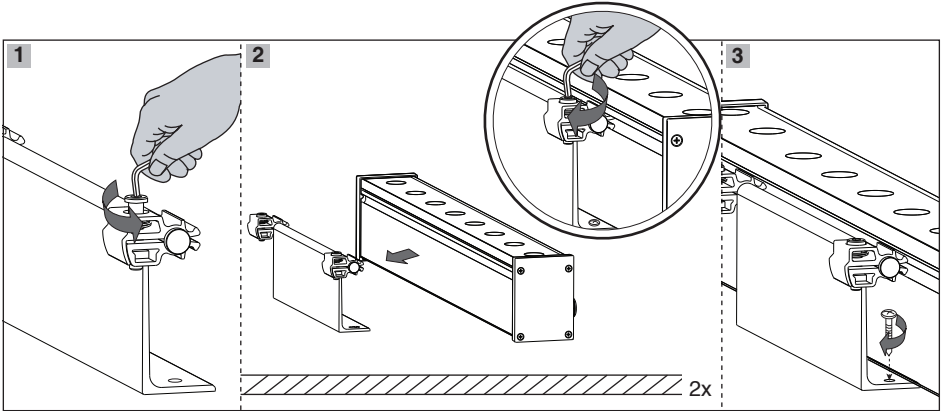
| Cable information: | | |
|--------------------|----------|-----------|
| | Diameter | Size |
| M485S... | max: 9.4 | 3x1-3x1.5 |

1 2

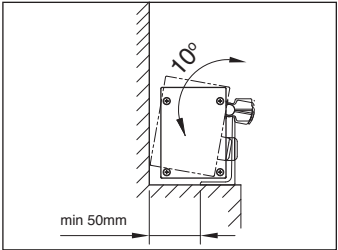
2 1

* The M485 version must be used instead of M485S at the end of the line in case of continuously mounting and also its socket is used to connect to power.

The LEDiLINE luminaires with 24cm length should not be continuously mounted along with other versions due to different lumen package.



Note: After cable connection, make sure that all parts of the socket and plug are completely closed.



Angle adjustment