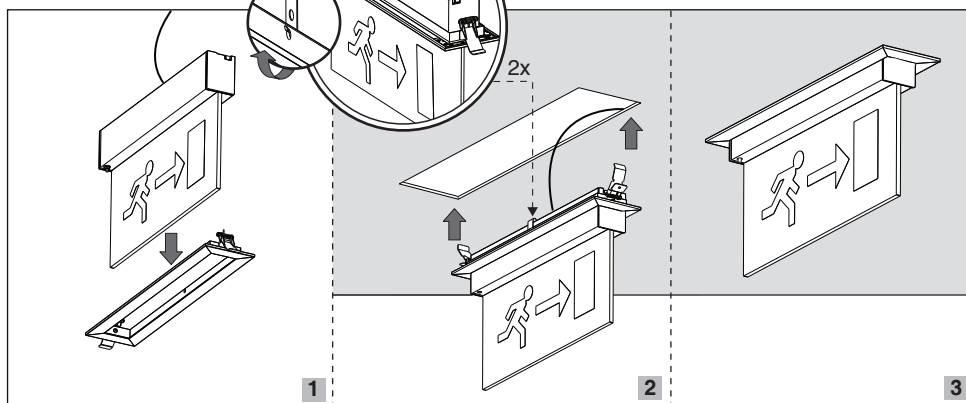
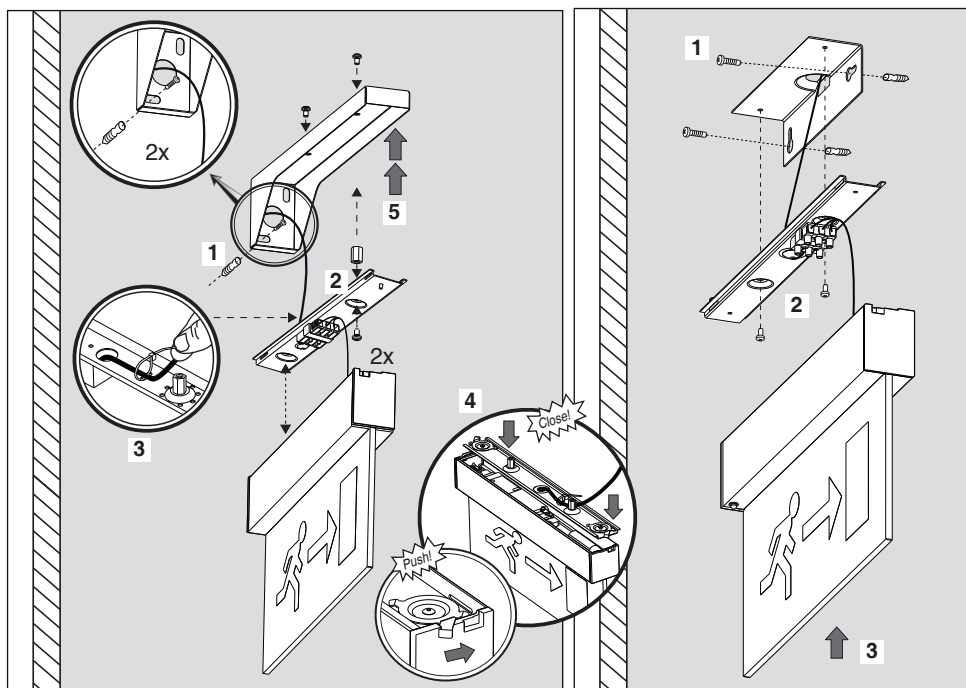


GRA2-Bracket

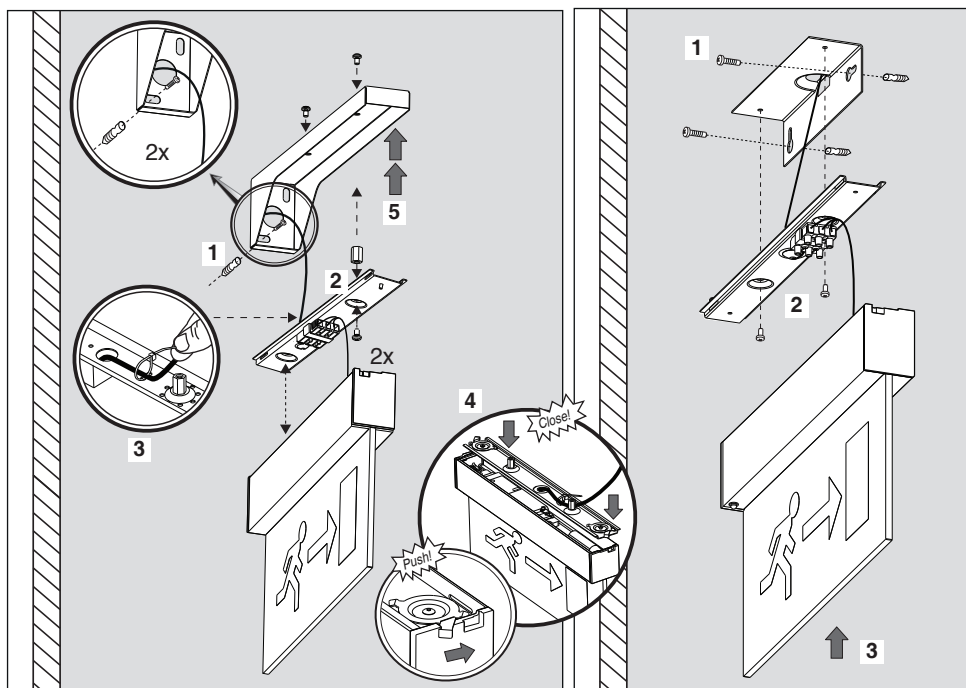


Note: To use WBV-Bracket, please pay attention to the distance from the bracket to the ceiling having enough space to fasten the screw on top.

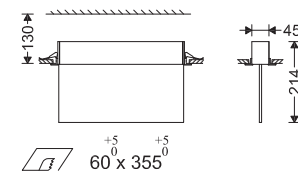
GWBV-Bracket



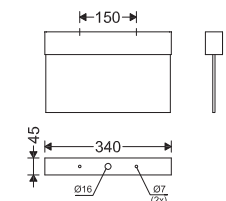
GWBP-Bracket



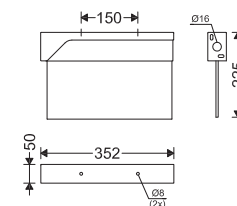
EN Instruction for Installation and Utilization of **LEADER** Light



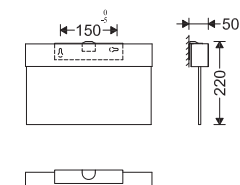
M217...+GRA2-Bracket



M217...



M217...+GWBV-Bracket



M217...+GWBP-Bracket



- 1- The luminaire should be put in emergency (battery discharge) mode every two months for at least 30 seconds.
- 2- The luminaire should be put in emergency (battery discharge) mode every three months for at least 90 minutes.
- 3- Do not short-circuit the battery wires.
- 4- Do not open or damage the battery pack.
- 5- Protect the battery against humid condition.
- 6- Do not expose the battery to direct sunlight or excessive heat.
- 7- Be careful in connecting positive and negative terminals.
- 8- Protect the battery against pressure and mechanical stress.
- 9- Do not throw battery into fire after usage.

