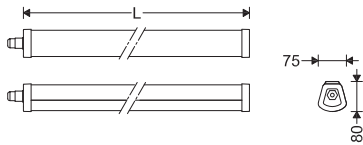


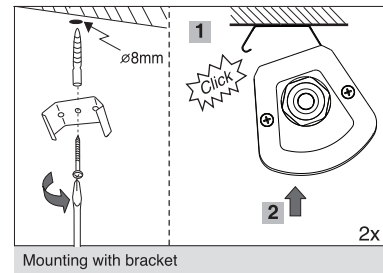
EN Instruction for Installation and Utilization of **ISOLA** Dust and Moisture Proof Luminaire



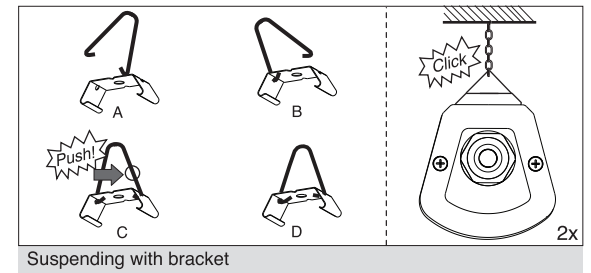
Cat. Code	Dimensions
	L(mm)
M456L60LED2	600
M456L120LED2	1170



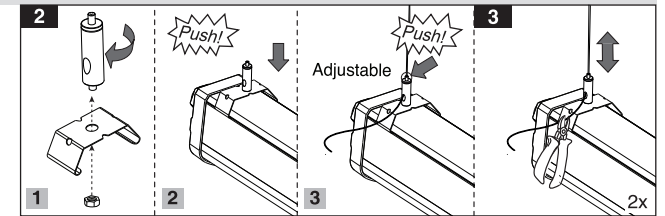
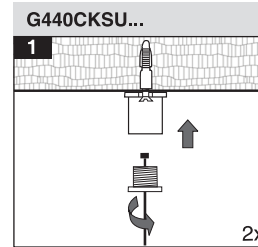
- 1- For proper utilization of this product and safety, it is mandatory to closely comply with the directions and notes in this instruction and guide.
- 2-When various power loads exist, a separate switchboard including all protective equipment should be considered for the lighting system.
- 3-During any construction process such as welding, etc., make sure that the luminaires are switched off or a stabilizer is used to prevent power disturbances leading to serious damage to the drivers or other electrical components.
- 4-Serious damage in electrical components will be caused by applying inappropriate voltage.
- 5-If a luminaire has a specified Ingress Protection rating, protection devices such as glands, etc., should be used to provide the desired IP.
- 6- Since this luminaire is made of plastic materials, its resistance against chemical products may be limited or even null.



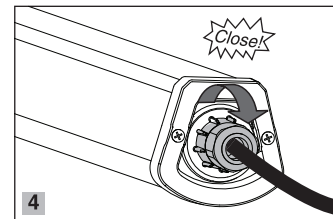
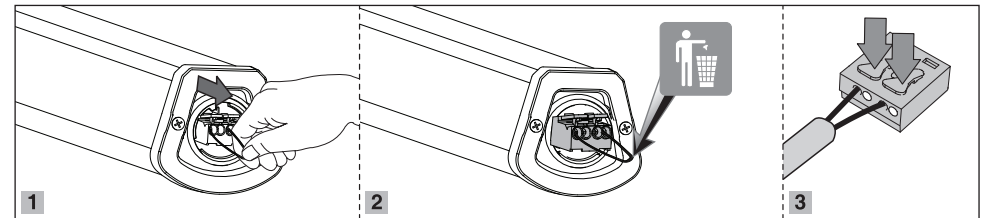
Mounting with bracket



Suspending with bracket



Electrical connection



Through wiring

