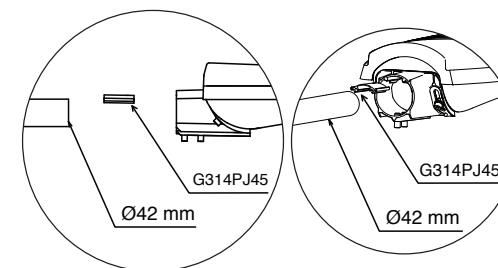


* **HELIUS M** can be ordered, upon request, with customized Timer Dimming scenarios. The above table can be completed in order to keep records of the customized settings. For more information, contact Megalite sales department.

Timer dimming setting

Seventh step	Sixth step	Fifth step	Fourth step	Third step	Second step	First step	
							Duration
							Dimming Value
Traditional Timer Dimming <input type="checkbox"/>		Self-Adapt-Percentage Timer <input type="checkbox"/>		Self-Adapt-Midnight Timer <input type="checkbox"/>			Dimming mode

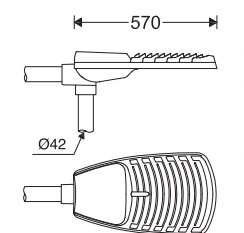
EN Instruction for Installation and Utilization of **HELIUS M**



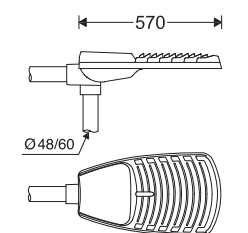
Mounting Height max: 15 m

Cx. S = 0.057 m²

Cat. No.	W (kg)
M314MU3LED67...	7.4
M314MU4LED77...	7.4
M314MU4LED97...	7.7



M314MU...+ 314PJ45



M314MU...

- !**
- 1- For proper utilization of this product and safety, it is mandatory to closely comply with the directions and notes in this instruction and guide.
 - 2- Earth connection as provided is mandatory.
 - 3- Do not directly touch or impact LED module.
 - 4- Do not stare at LED light source.
 - 5- The light source contained in this luminaire shall only be replaced by the manufacturer or his service agent or a similar qualified person. Always switch off the power prior to installation, maintenance or repair activities.

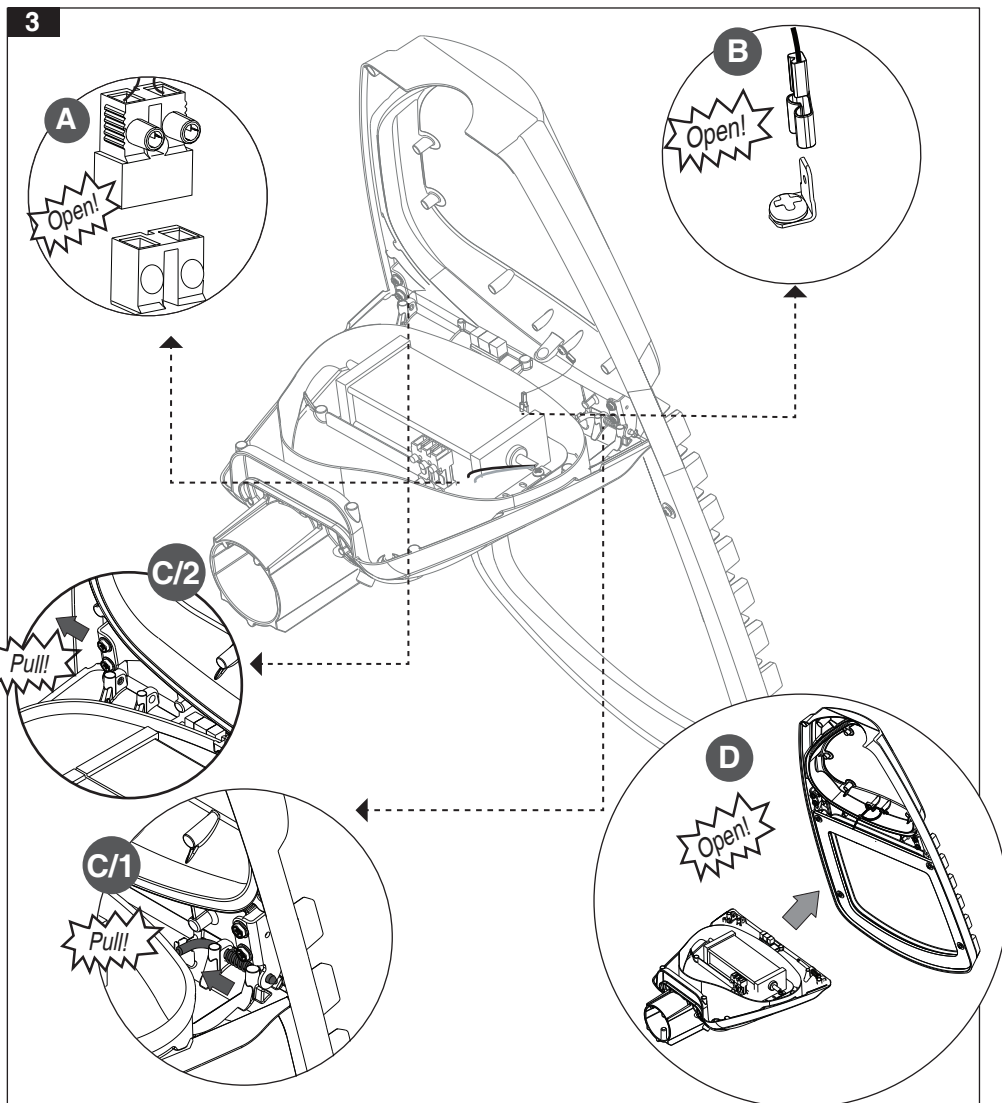
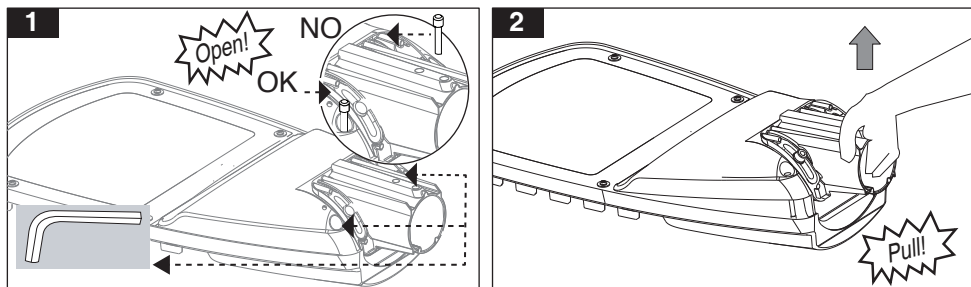
Megalite

Crafted for Brilliance

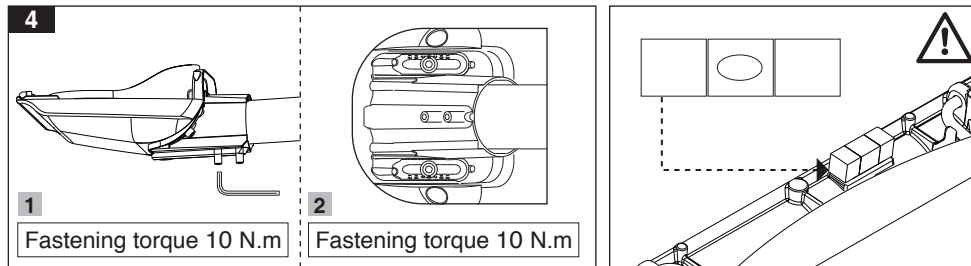
7002018812

www.megalite.com info@megalite.com

Open the luminaire door:

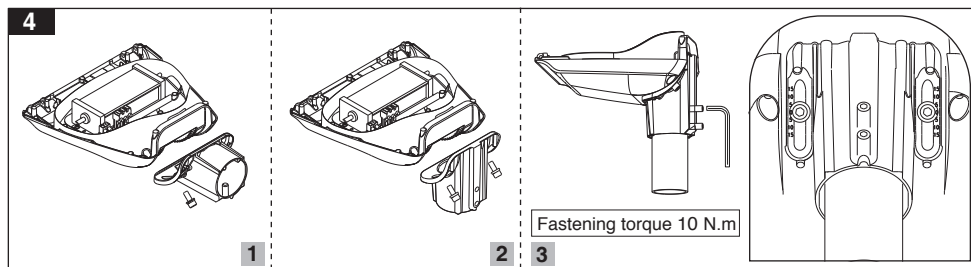


Horizontal pole mounting:



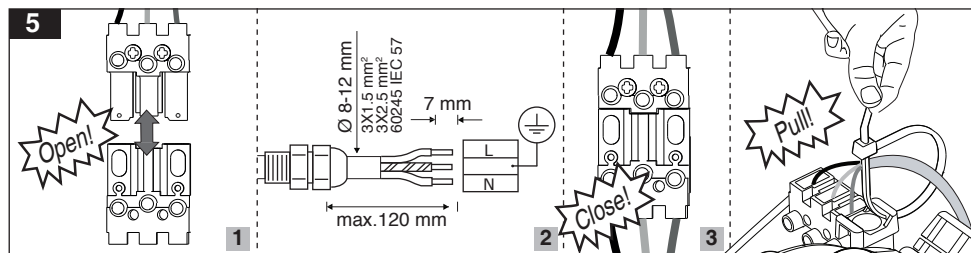
⚠ Up to ± 15 degrees angle adjustment, Bubble level feature to precisely align luminaire with horizontal plane

Vertical pole mounting:



⚠ Up to ± 15 degrees angle adjustment

Electrical connections:



Close the luminaire door:

