

Mounting Height max: 15 m

Cx. S = 0.057 m²

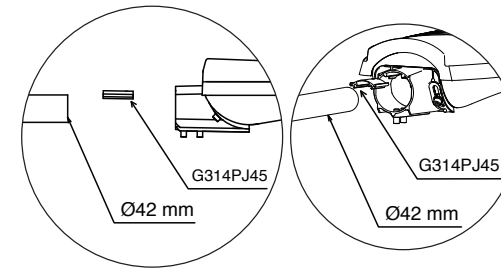
EN Instruction for Installation and Utilization of **HELIUS M**

7002018809

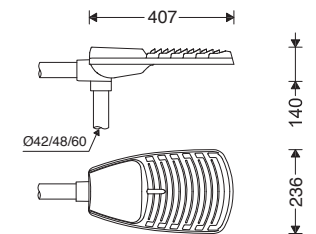
info@megalite.com

www.megalite.com

Megalite

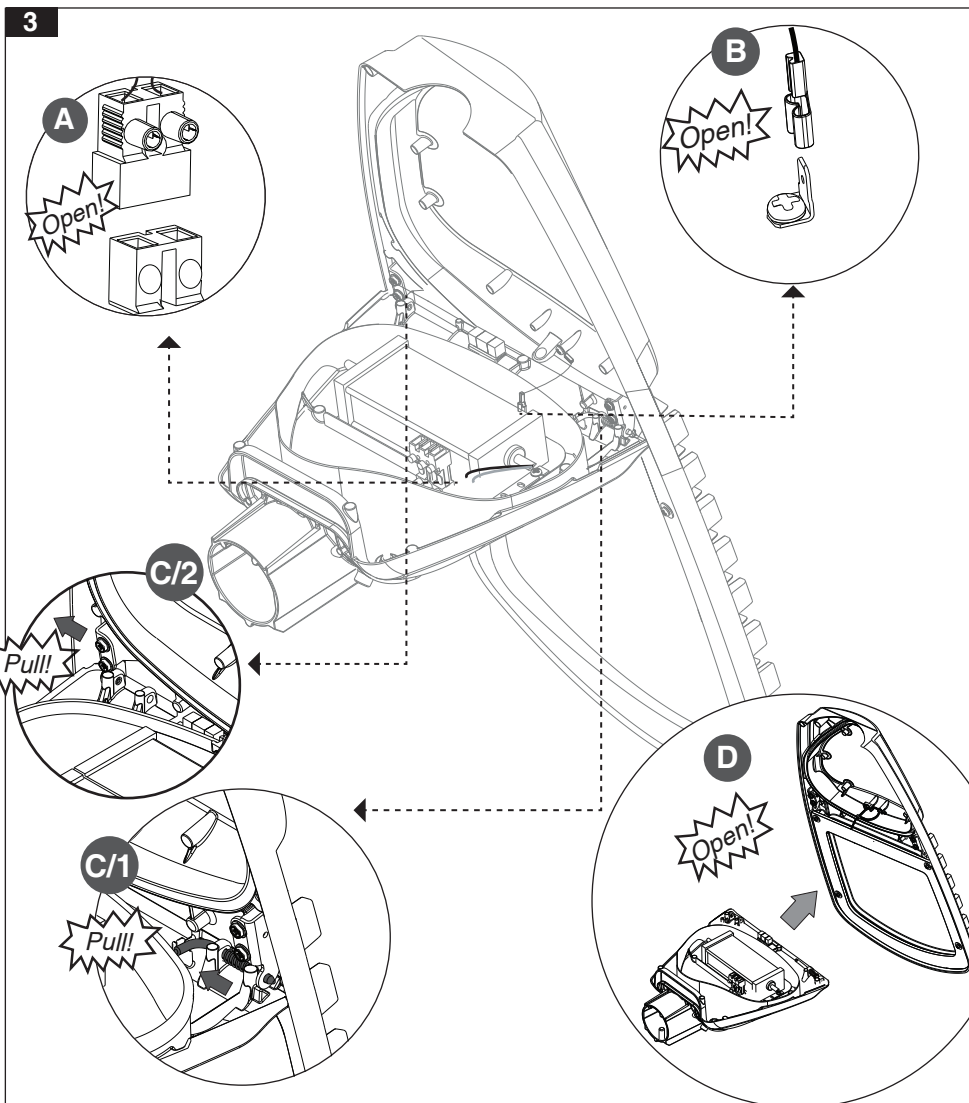
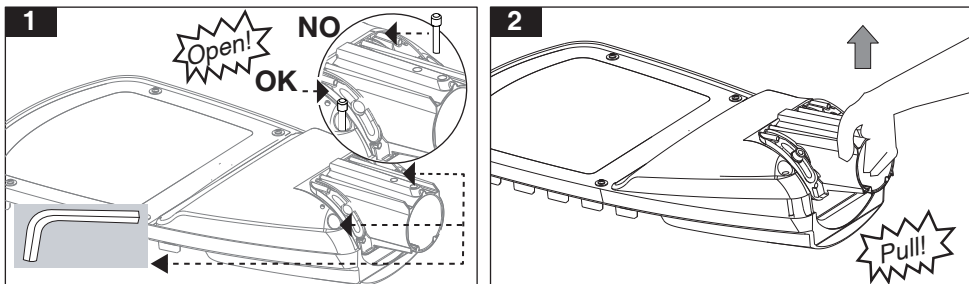


Cat. No.	W (kg)
M314MU3LED67...	7.4
M314MU4LED77...	7.4
M314MU4LED97...	7.7

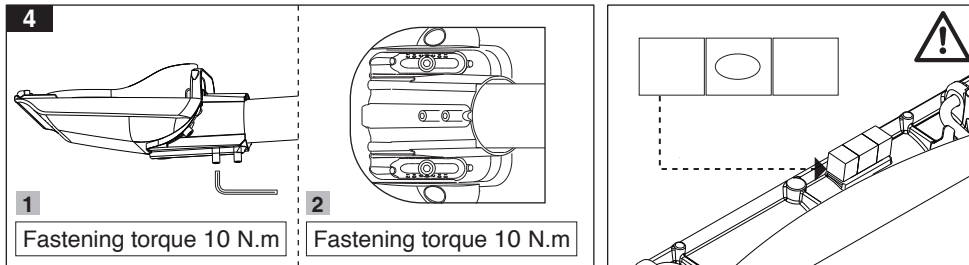


- 1- For proper utilization of this product and safety, it is mandatory to closely comply with the directions and notes in this instruction and guide.
- 2- Earth connection as provided is mandatory.
- 3- Do not directly touch or impact LED module.
- 4- Do not stare at LED light source.
- 5- The light source contained in this luminaire shall only be replaced by the manufacturer or his service agent or a similar qualified person. Always switch off the power prior to installation, maintenance or repair activities.

Open the luminaire door:

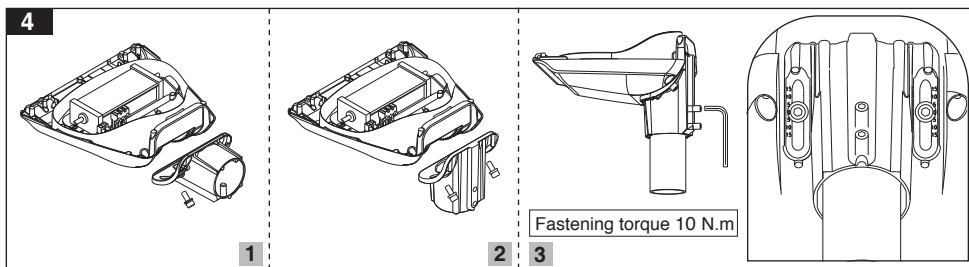


Horizontal pole mounting:



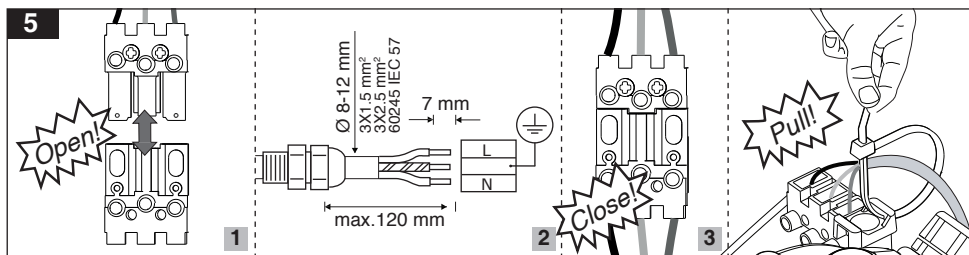
⚠ Up to ±15 degrees angle adjustment, Bubble level feature to precisely align luminaire with horizontal plane

Vertical pole mounting:



⚠ Up to ±15 degrees angle adjustment

Electrical connections:



Close the luminaire door:

