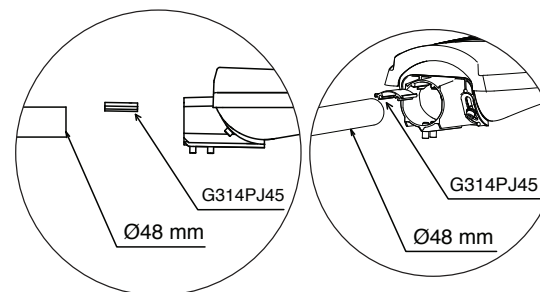
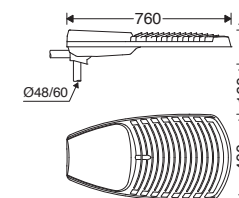


Mounting Height max: 15 m

Cx. S = 0.074 m²

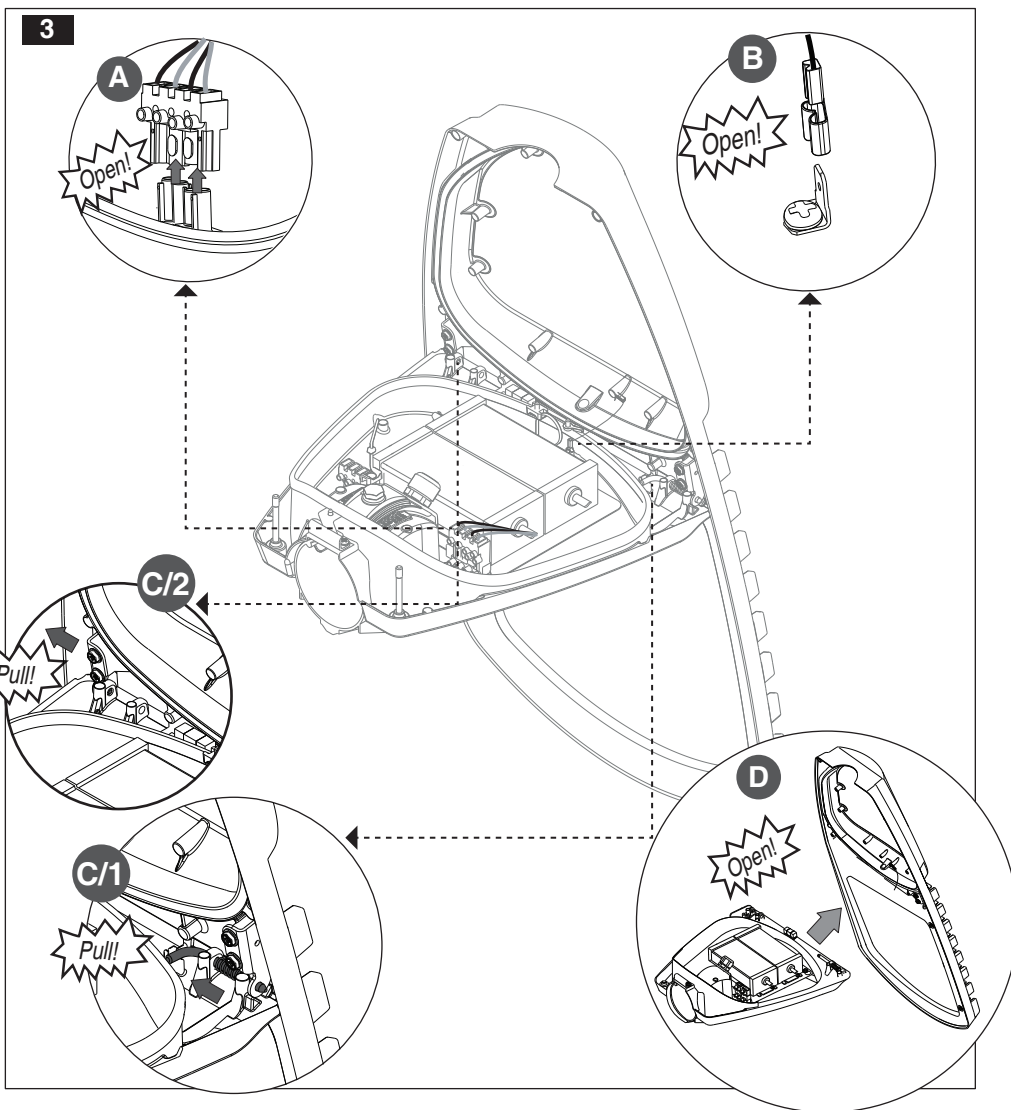
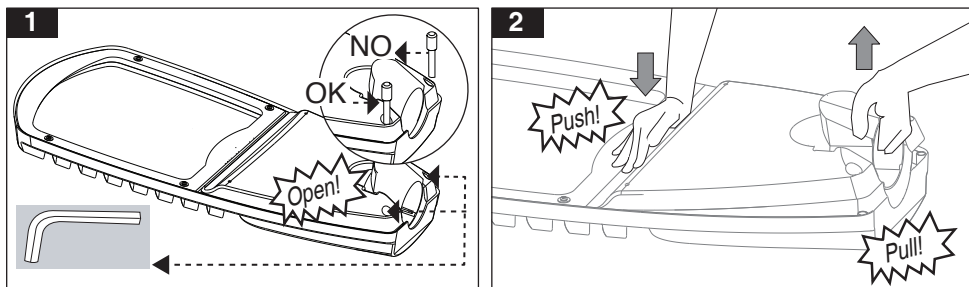


Cat. No.	W (kg)
M314L...	12.3

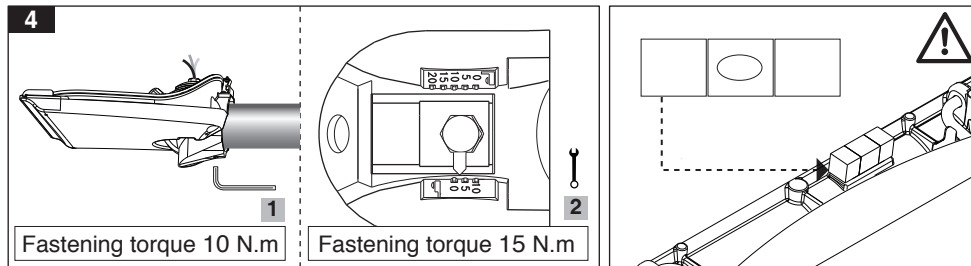


- 1- For proper utilization of this product and safety, it is mandatory to closely comply with the directions and notes in this instruction and guide.
- 2- Earth connection as provided is mandatory.
- 3- Do not directly touch or impact LED module.
- 4- Do not stare at LED light source.
- 5- The light source contained in this luminaire shall only be replaced by the manufacturer or his service agent or a similar qualified person. Always switch off the power prior to installation, maintenance or repair activities.

Open the luminaire door:

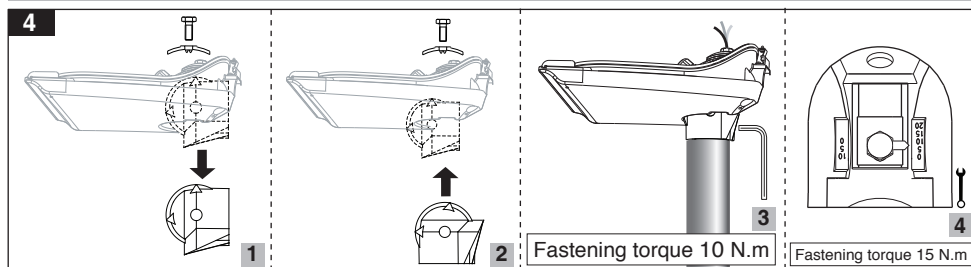


Horizontal pole mounting:

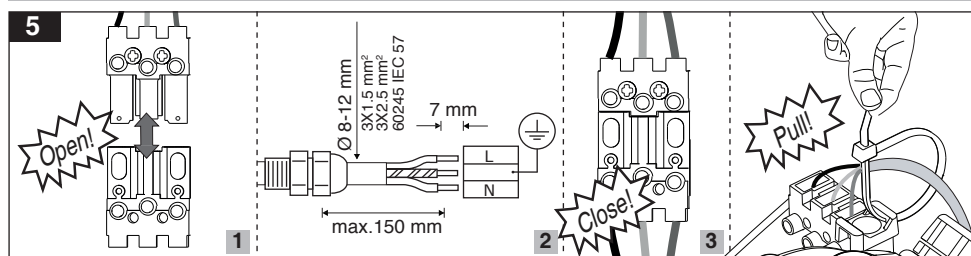


! Bubble level feature to precisely align luminaire with horizontal plane

Vertical pole mounting:



Electrical connections:



Close the luminaire door:

