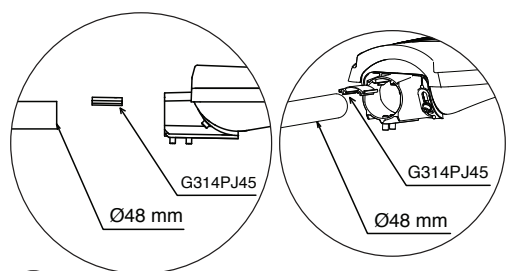


Mounting Height max: 15 m

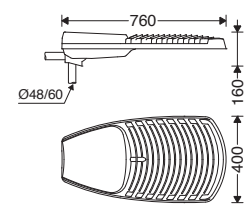
Cx. S = 0.074 m²

EN Instruction for Installation and Utilization of **HELIUS L**

www.megalite.com info@megalite.com 7002017509

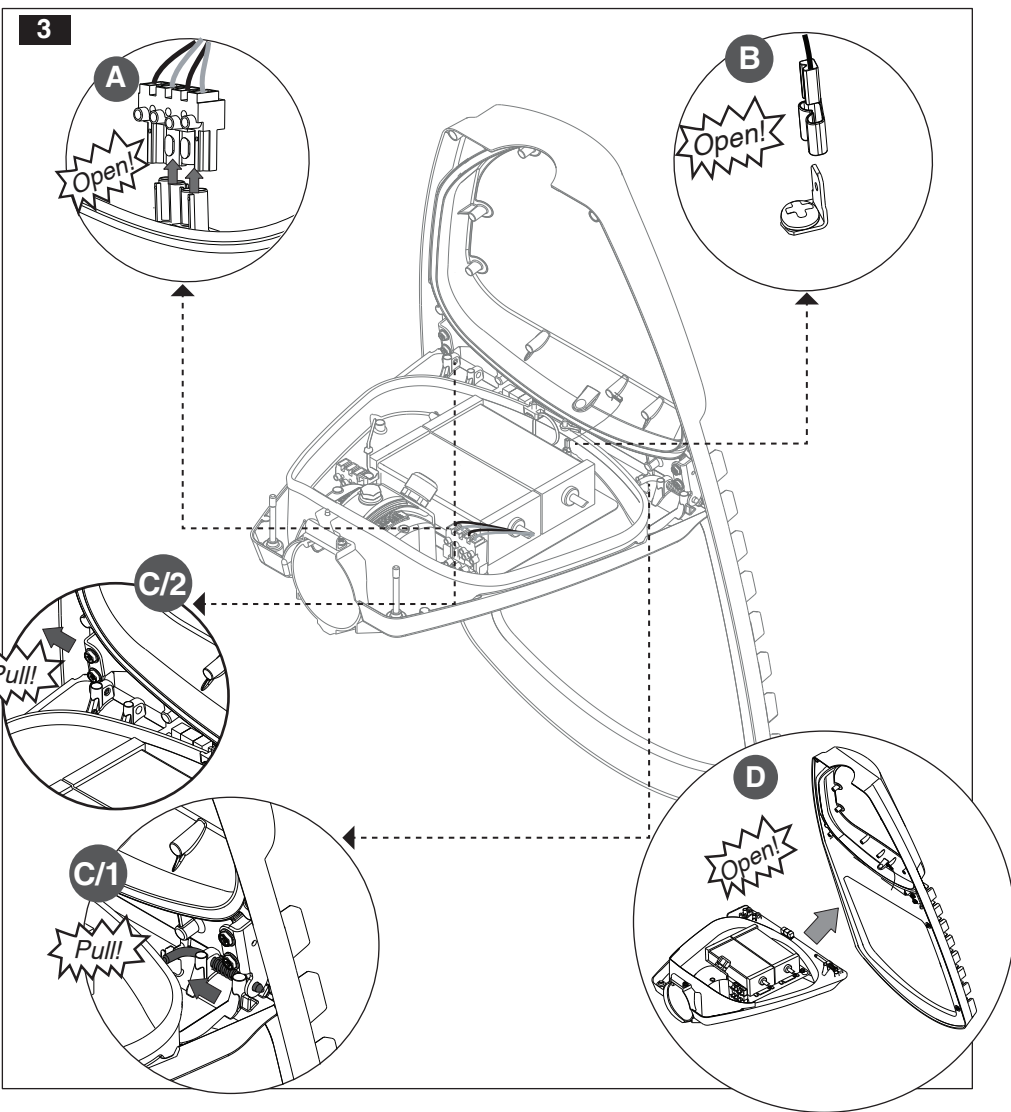
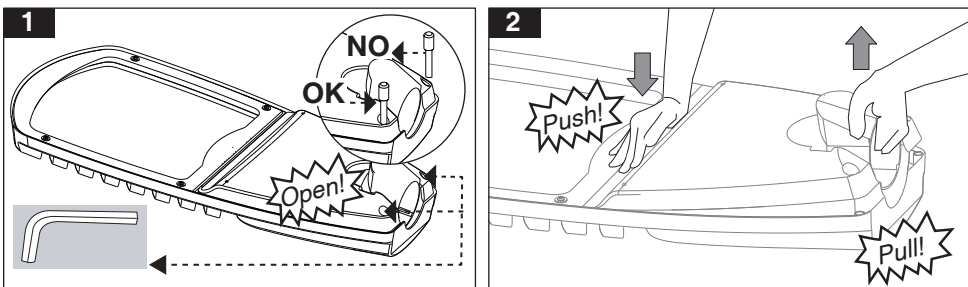


Cat. No.	W (kg)
M314LU3LED7730-S	10.3
M314LU3LED7740-S	10.3
M314LU4LED9730-S	10.8
M314LU4LED9740-S	10.8
M314LU5LED10730-S	11.3
M314LU5LED10740-S	11.3

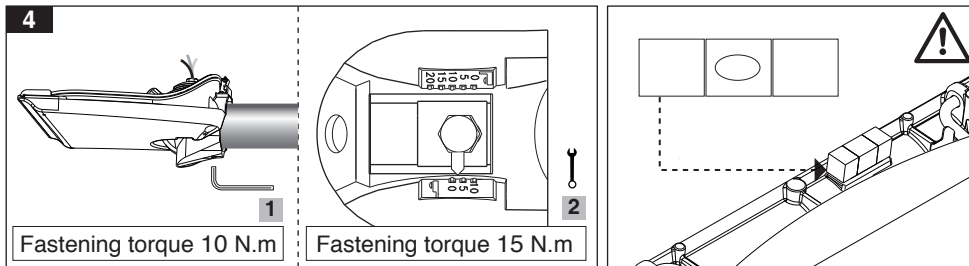


- 1- For proper utilization of this product and safety, it is mandatory to closely comply with the directions and notes in this instruction and guide.
- 2- Earth connection as provided is mandatory.
- 3- Do not directly touch or impact LED module.
- 4- Do not stare at LED light source.
- 5- The light source contained in this luminaire shall only be replaced by the manufacturer or his service agent or a similar qualified person. Always switch off the power prior to installation, maintenance or repair activities.

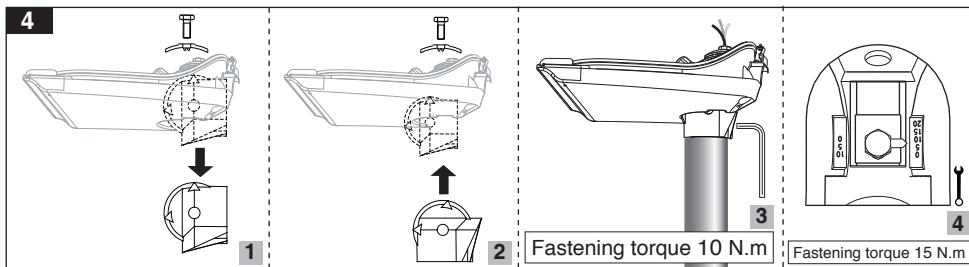
Open the luminaire door:



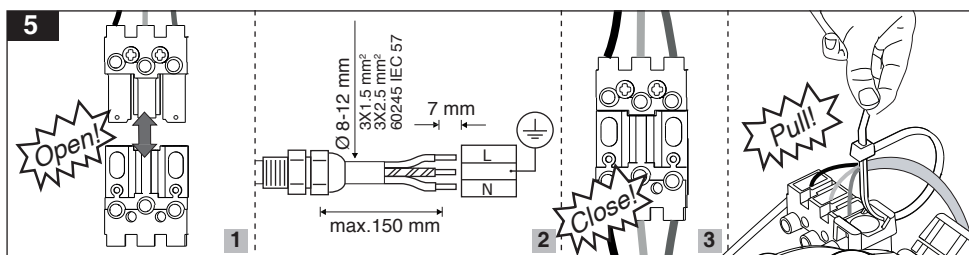
Horizontal pole mounting:



Vertical pole mounting:



Electrical connections:



Close the luminaire door:

