

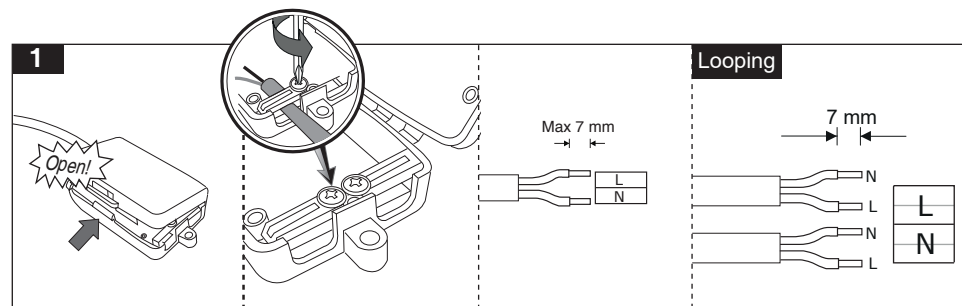
M491D...

Cat. No	D (mm)	D1 (mm)	L (mm)	L1 (mm)
M491D61LED...	170	150	96	40
M491D81LED...	220	200	115	40



- 1- For safety and proper utilization of this product, it is mandatory to closely comply with the directions in this instruction/maintenance guide.
- 2- When various power loads exist, a separate switchboard including all protective equipment should be considered for the lighting system.
- 3- During any construction process such as welding, etc., make sure that the luminaires are switched off or a stabilizer is used to prevent power disturbances leading to serious damage to the drivers or other electrical components.
- 4- Serious damage in electrical components will be caused by applying inappropriate voltage.
- 5- Do not stare at LED light source.
- 6- Do not directly touch or impact LED module.

1



2

