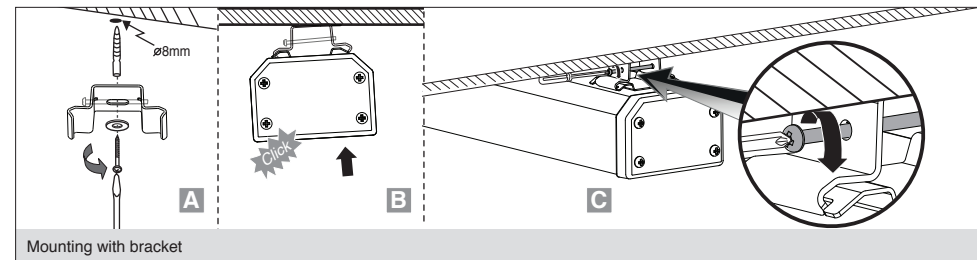


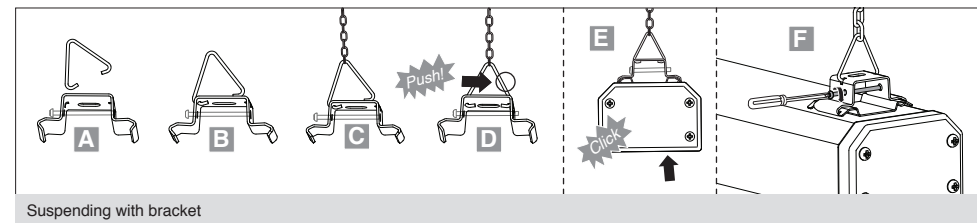
Cat. Code	Dimensions		W (kg)
	L(mm)	L1(mm)	
M450C601LED...	630	500	2.3
M450C1202LED...	1189	800	4.3



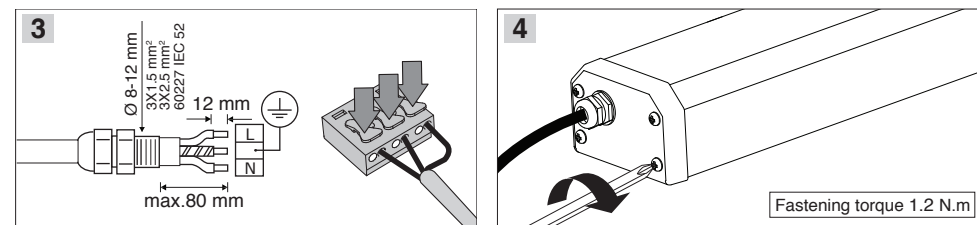
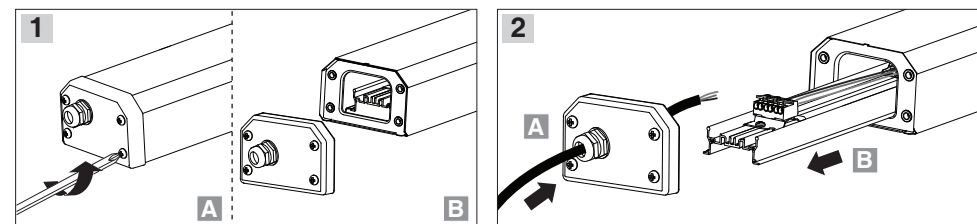
- 1- For proper utilization of this product and safety, it is mandatory to closely comply with the directions and notes in this instruction and guide.
- 2- Earth connection as provided is mandatory.
- 3- Do not directly touch or impact LED module.
- 4- Do not stare at LED light source.
- 5- The light source of this luminaire is not replaceable; when the light source reaches its end of life the whole luminaire shall be replaced



Mounting with bracket

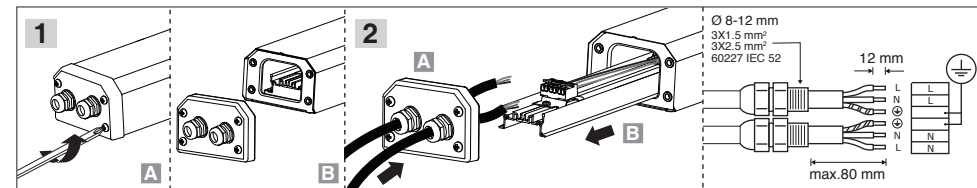


Suspending with bracket

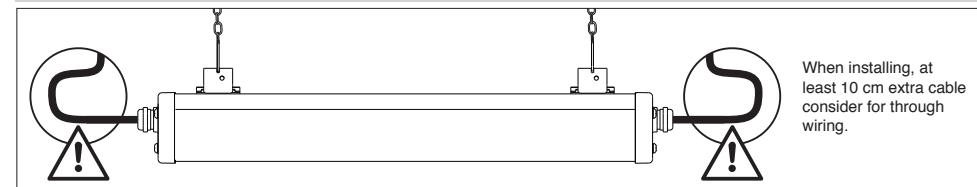


Fastening torque 1.2 N.m

Looping



Through wiring



When installing, at least 10 cm extra cable consider for through wiring.