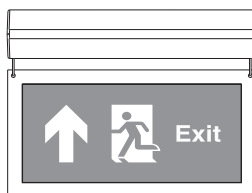
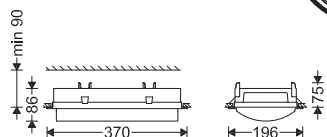
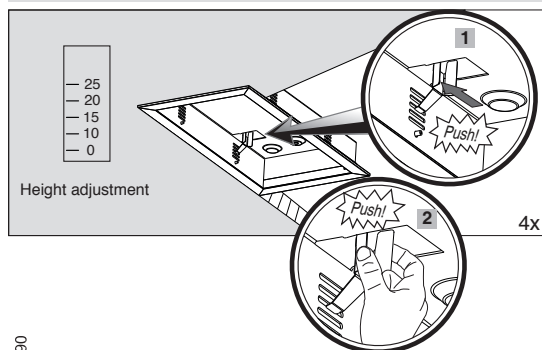


M216...+GEM-... ST



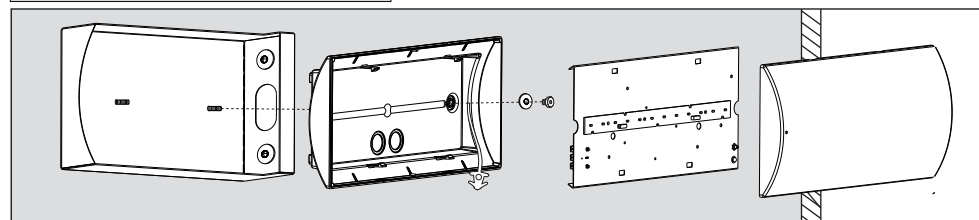
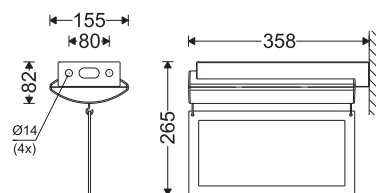
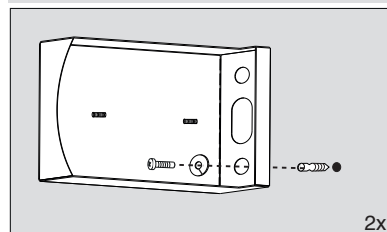
M216...+GEM-PV1 BOARD

GRA1-BRACKET



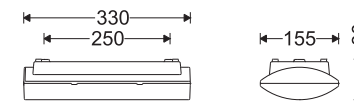
350 x 170⁺⁵₋₀

GWB1-BRACKET



7002006808

www.megalite.com info@megalite.com



M216...

- 1- The luminaire should be put in emergency (battery discharge) mode every two months for at least 30 seconds.
- 2- The luminaire should be put in emergency (battery discharge) mode every six months for at least 90 minutes.
- 3- Do not short-circuit the battery wires.
- 4- Do not open or damage the battery pack.
- 5- Protect the battery against humid condition.
- 6- Do not expose the battery to direct sunlight or excessive heat.
- 7- Be careful in connecting positive and negative terminals.
- 8- Protect the battery against pressure and mechanical stress.
- 9- Do not throw battery into fire after usage.

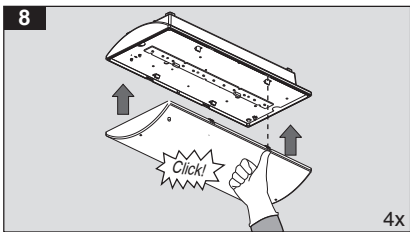
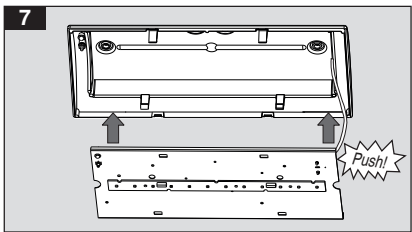
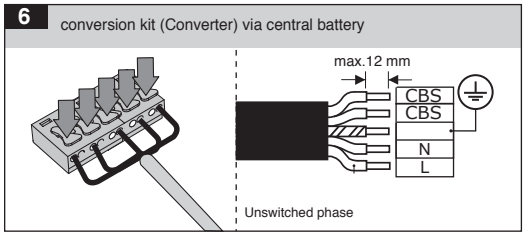
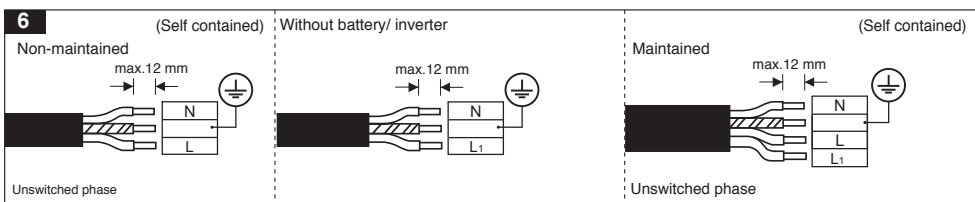
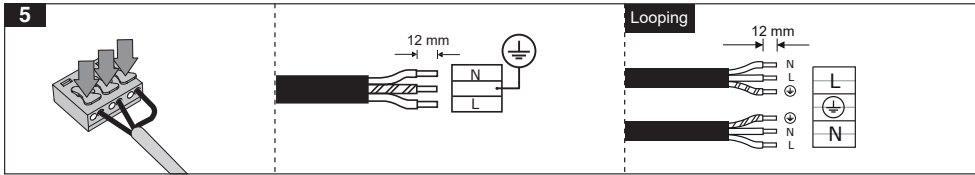
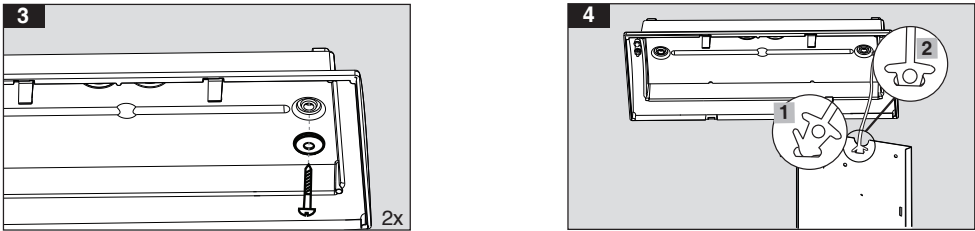
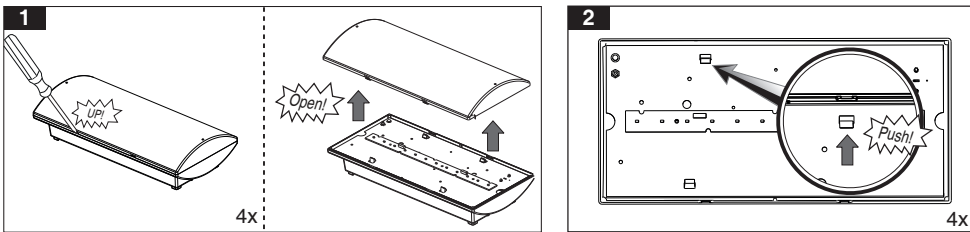
Attention:

Considering the fact that lighting source may turn off quickly after test, It is better to perform the test when the least danger probability is expected. (i.e. during day hours).
For correct operating test, emergency power supply which is called unswitched electricity too, should be disconnected.
By reconnecting the unswitched supply, luminaire runs on former operating mode.

It is recommended to use below table for testing the battery:

| Month | Test type | First year | | Second year | | Third year | | Forth year | | Fifth year | |
|-------------|------------|------------|-----------|-------------|-----------|------------|-----------|------------|-----------|------------|-----------|
| | | Date | Signature | Date | Signature | Date | Signature | Date | Signature | Date | Signature |
| Launch time | 90 minutes | | | | | | | | | | |
| 2nd | 30 seconds | | | | | | | | | | |
| 4th | 30 seconds | | | | | | | | | | |
| 6th | 90 minutes | | | | | | | | | | |
| 8th | 30 seconds | | | | | | | | | | |
| 10th | 30 seconds | | | | | | | | | | |
| 12th | 90 minutes | | | | | | | | | | |

Surface mounted



EM-PV1 BOARD

