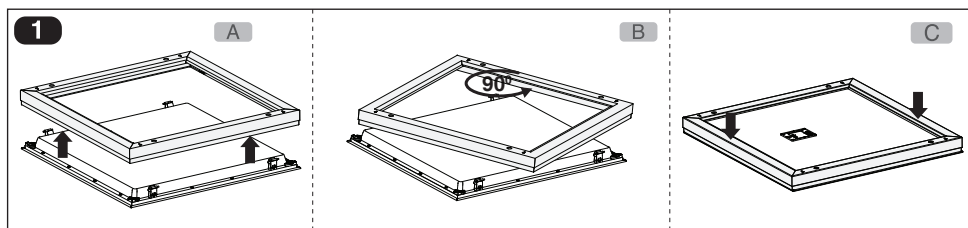
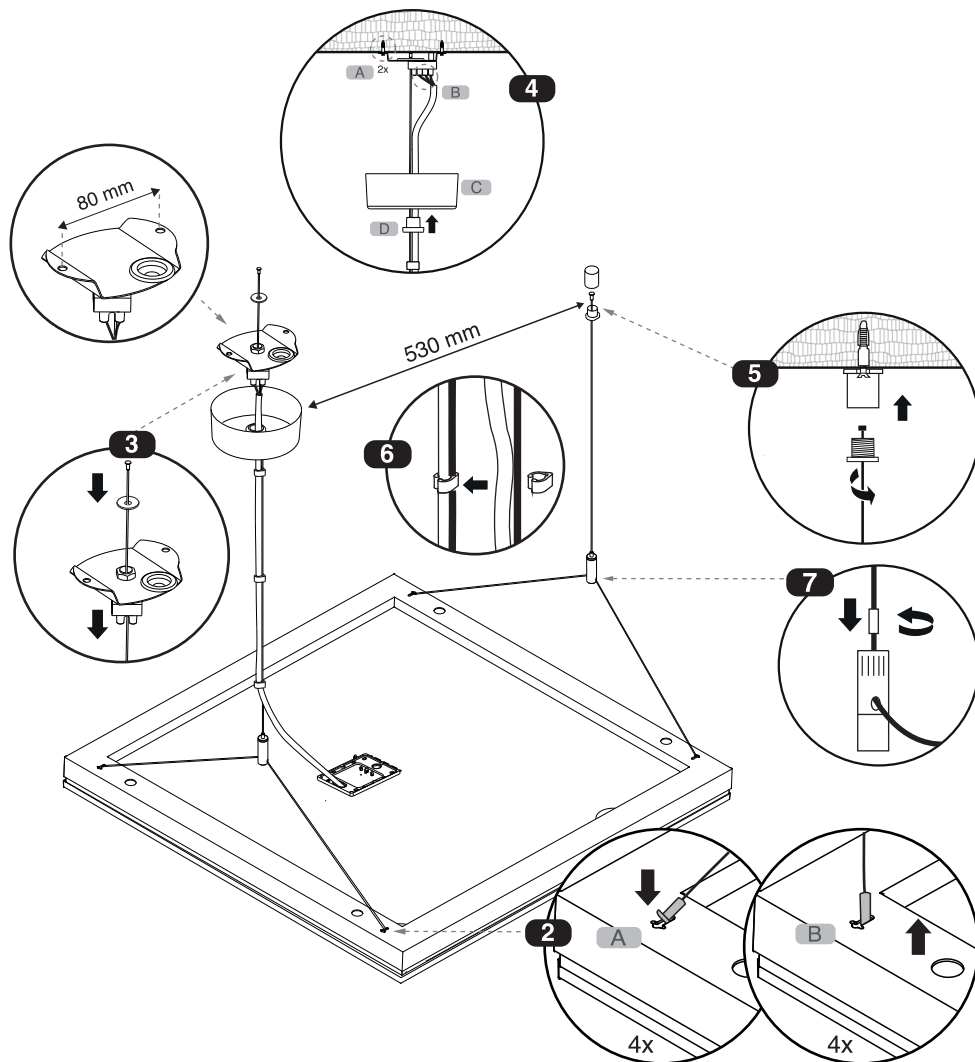


Instruction for installation and utilization of **BRILLIANCE** Suspended Luminaire (60x60)

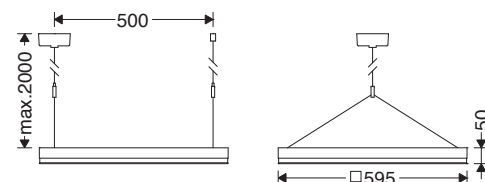
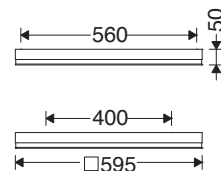


EN

Instruction for installation and utilization of **BRILLIANCE** Surface Mount/Suspended Low UGR Luminaire (60x60)

7002025502

www.megalite.com info@megalite.com



Megalite
Crafted for Brilliance

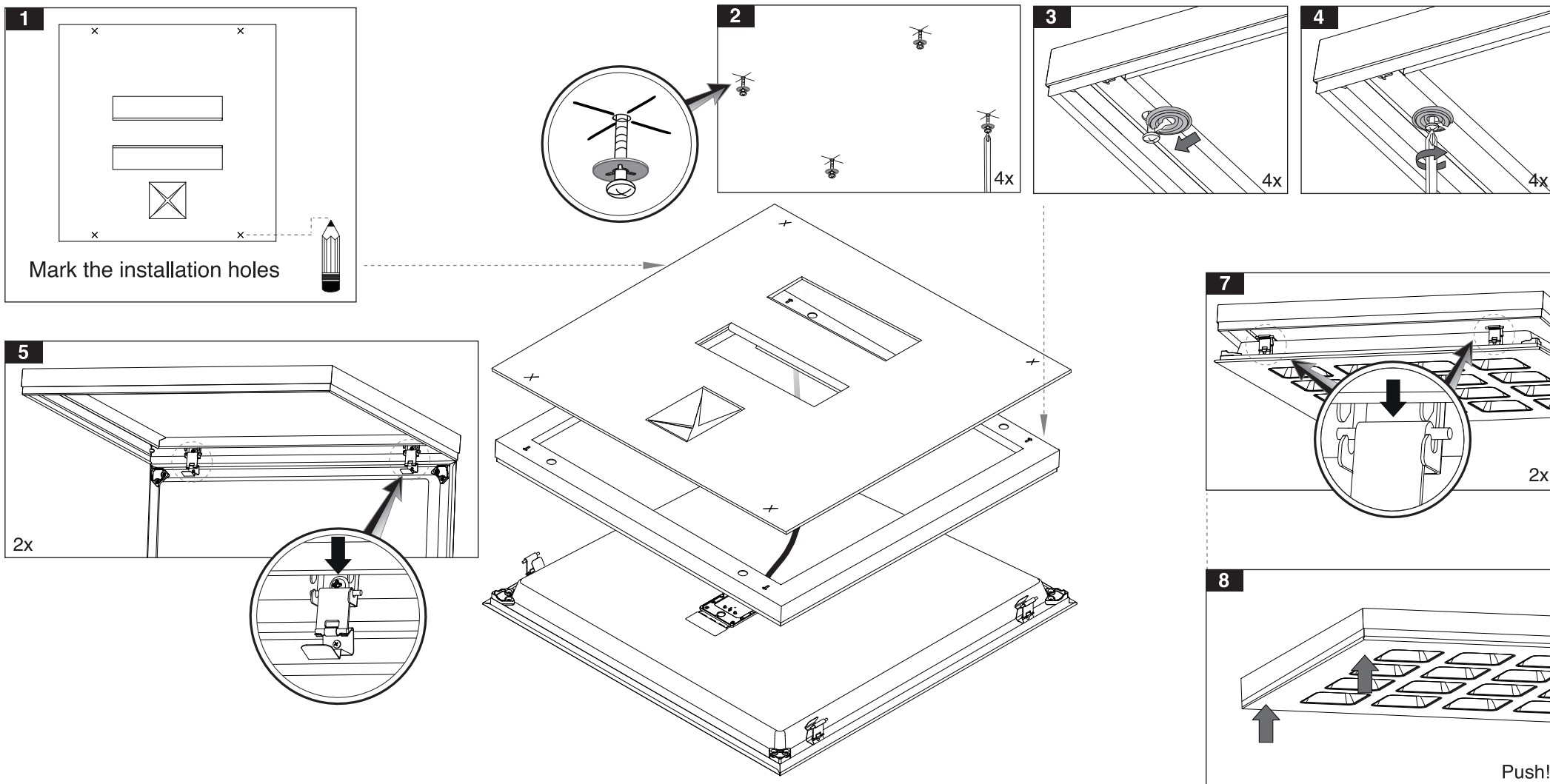
M634S...

M634S... + G421SKSU2-W



- 1- For proper utilization of this product and safety, it is mandatory to closely comply with the directions and notes in this instruction and guide.
- 2- Earth connection as provided is mandatory.
- 3- Do not stare at LED light source.

Instruction for installation and utilization of **BRILLIANCE** Surface Mount Luminaire (60x60)



Electrical connection:

